

PSD Questionnaire Summary By EPA Regions

By

Annamaria Coulter, EPA R2

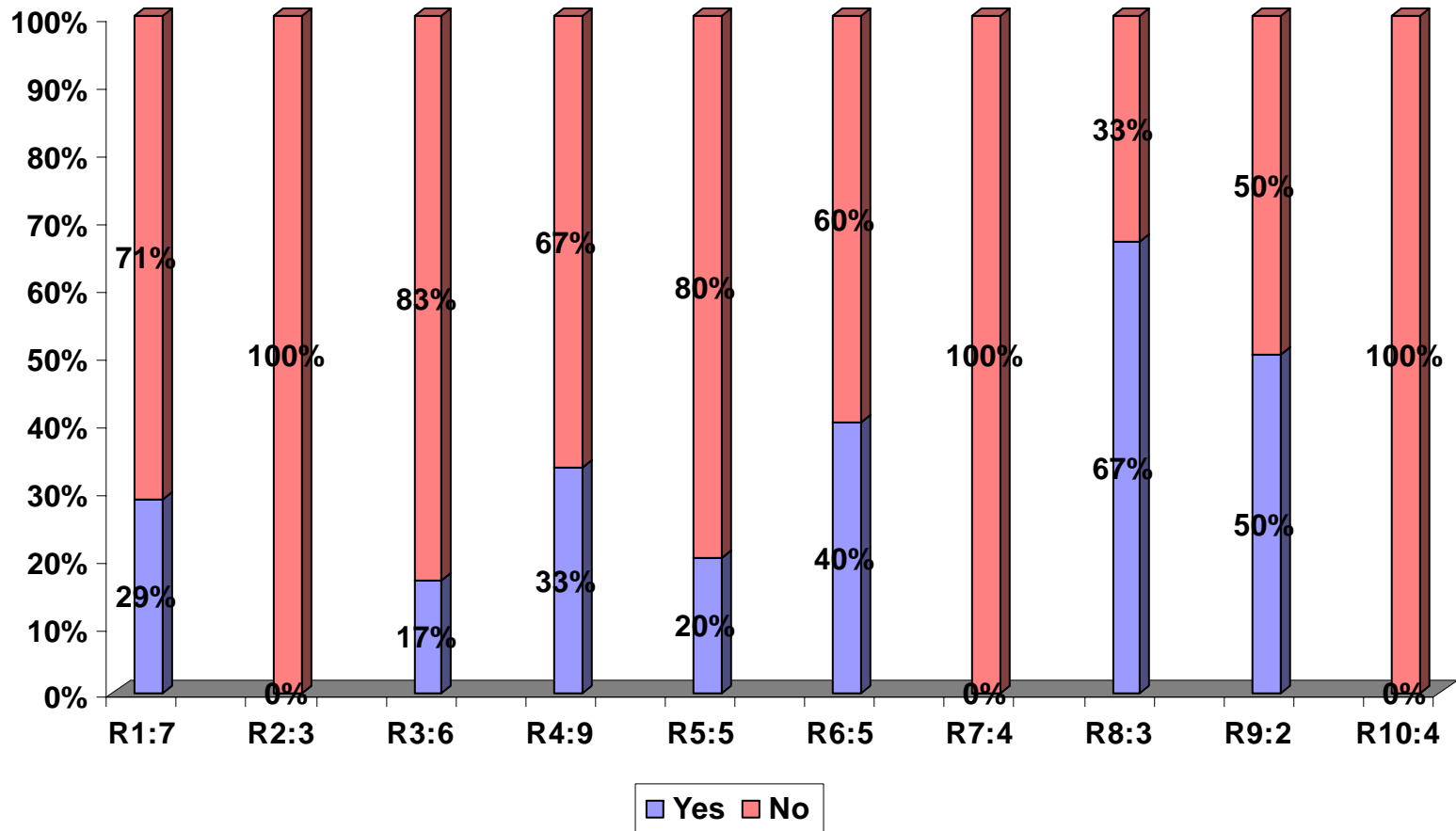
Kevin Golden, EPA R8

Rob Wilson, EPA R10

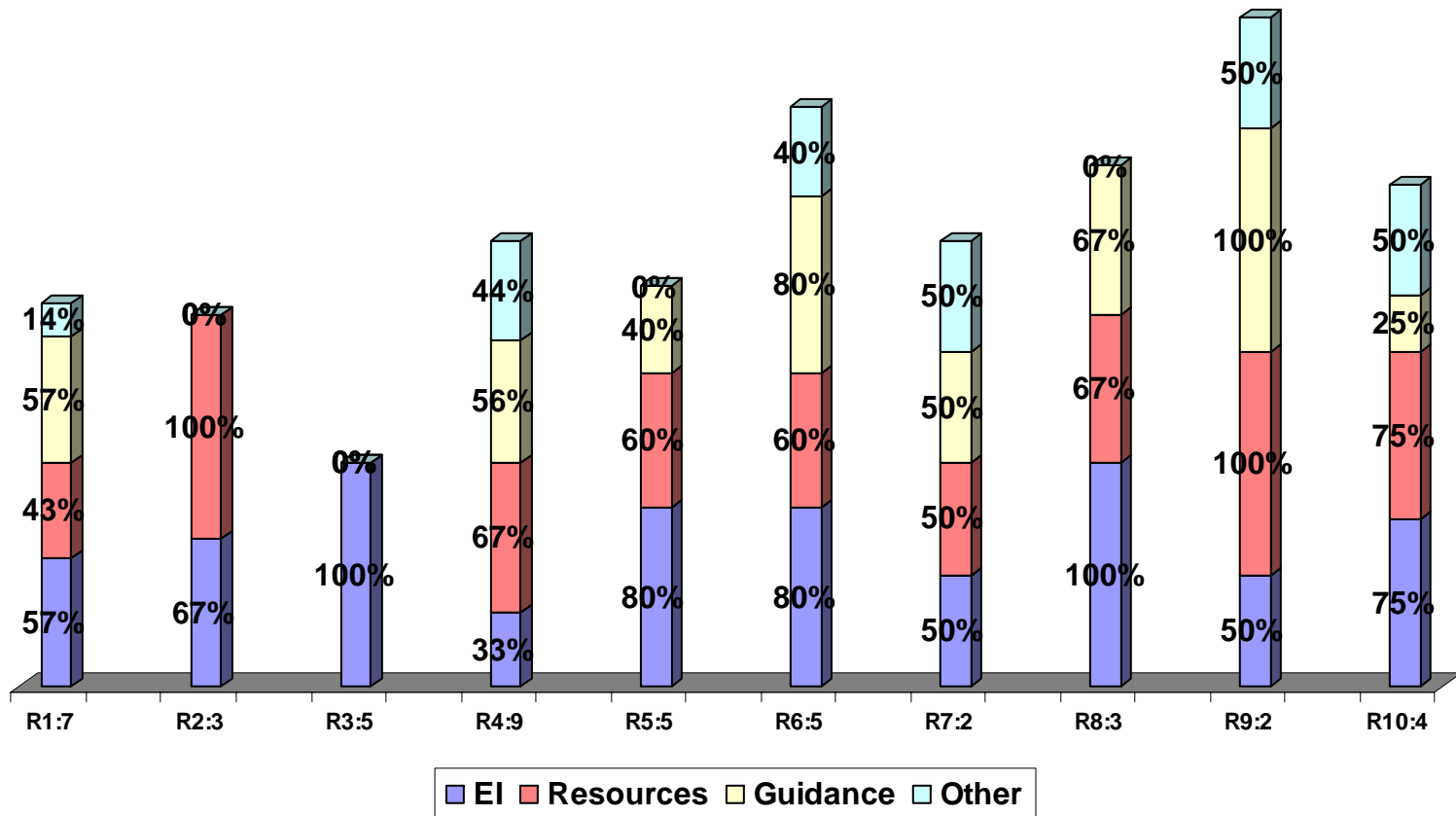
Herman Wong, EPA R10

Melissa McCullough, OAQPS

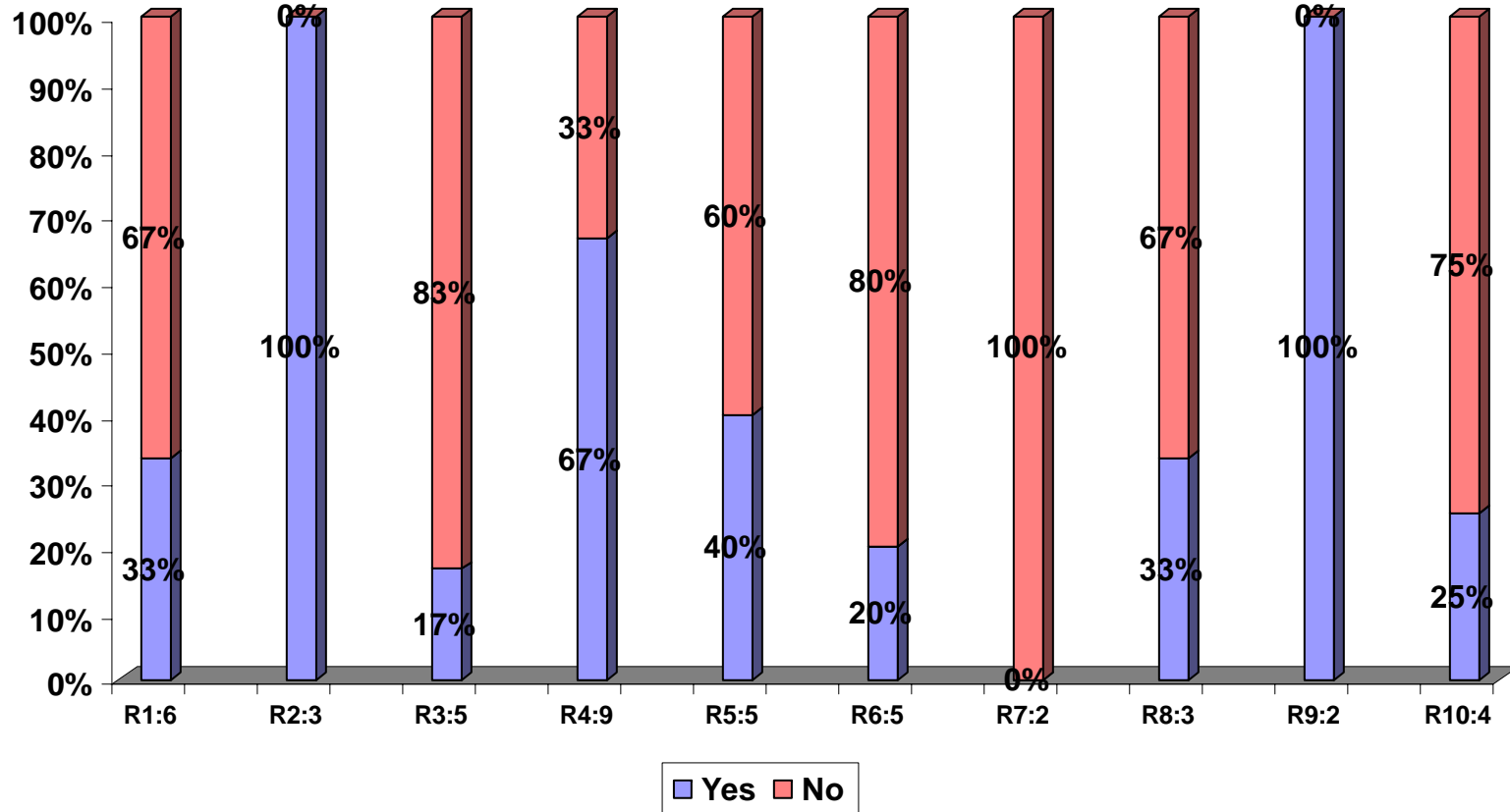
Q1a. Does The State Routinely Track PSD Increment?



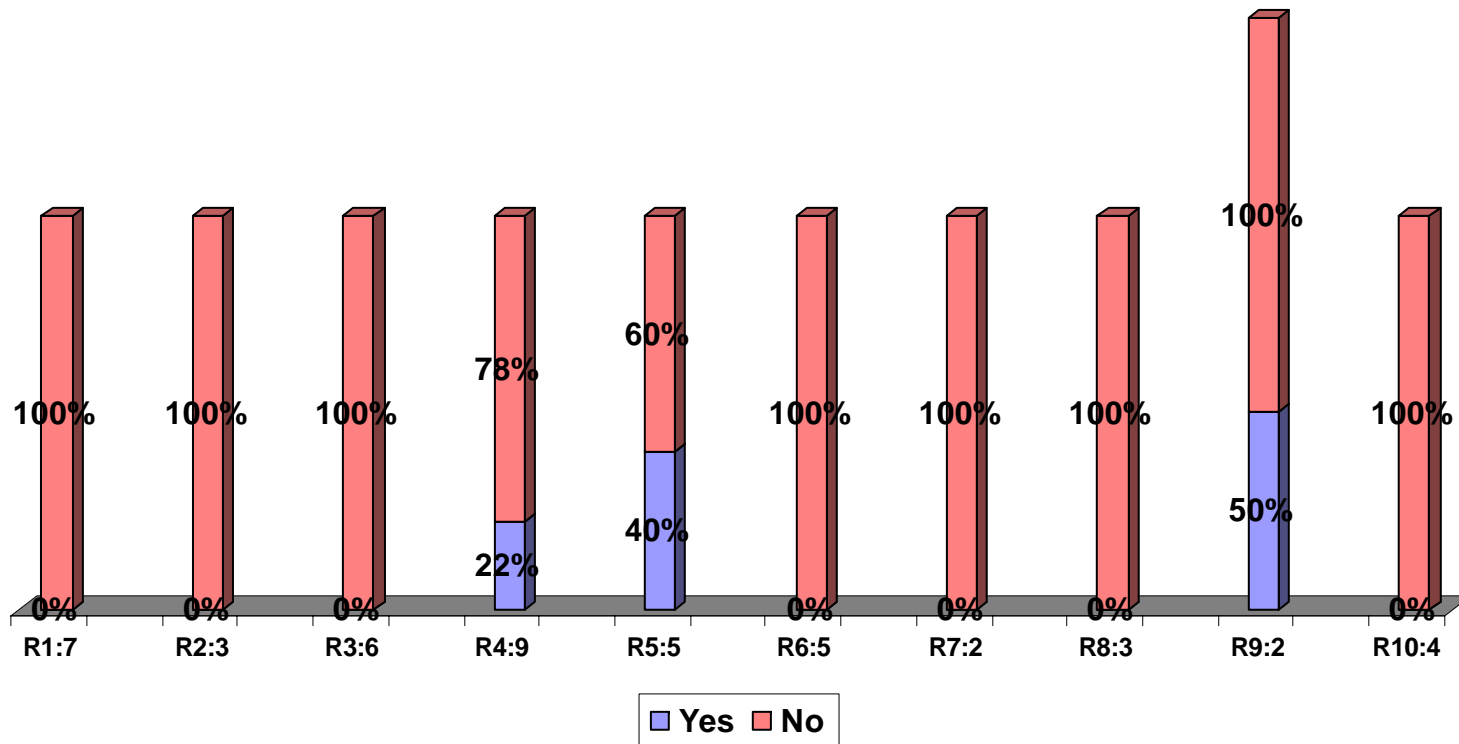
Q2. Which Of The Following Is The Major Difficulty In Tracking Increment Consumption?



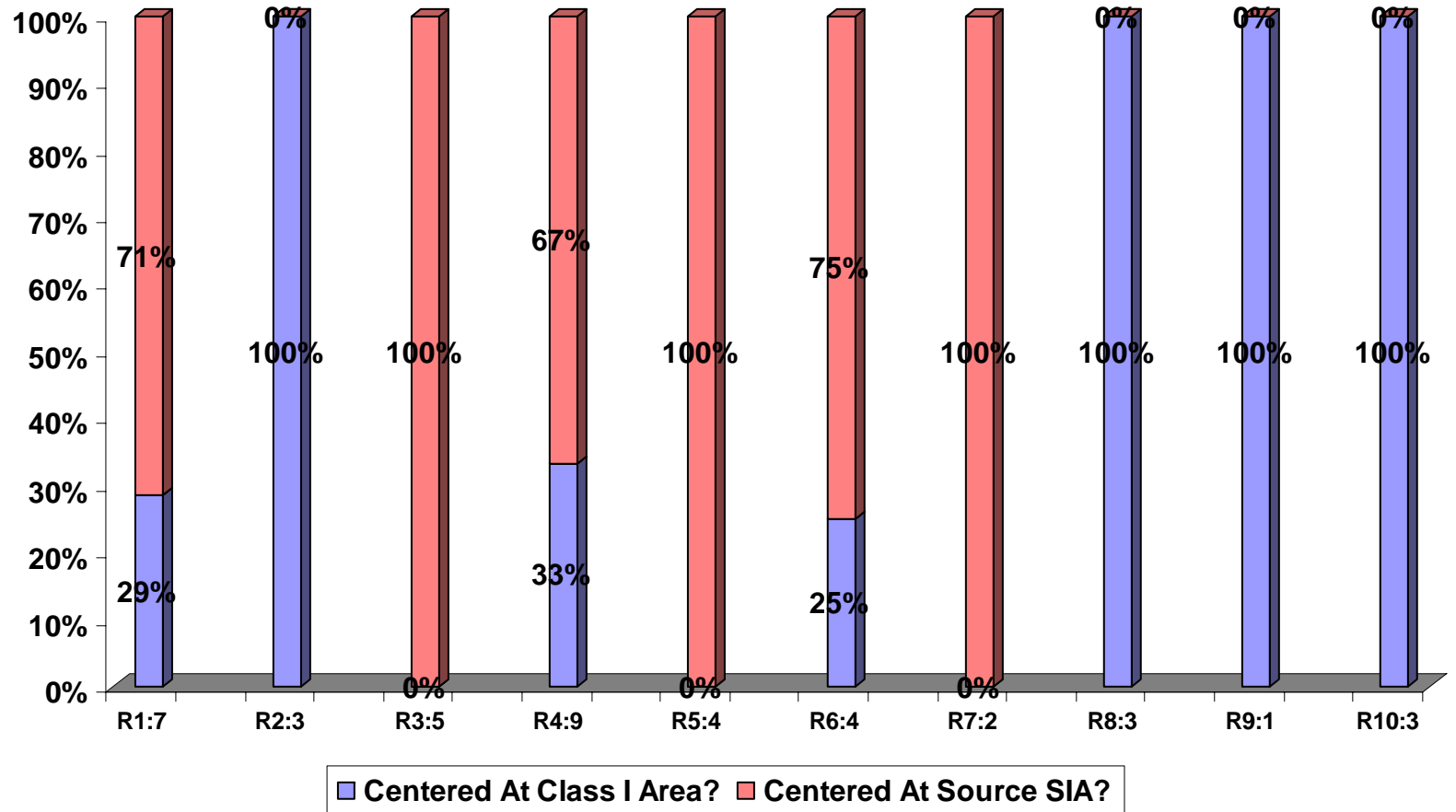
Q3. Has The State Ever Identified A Class I or Class II Area Increment Violation?



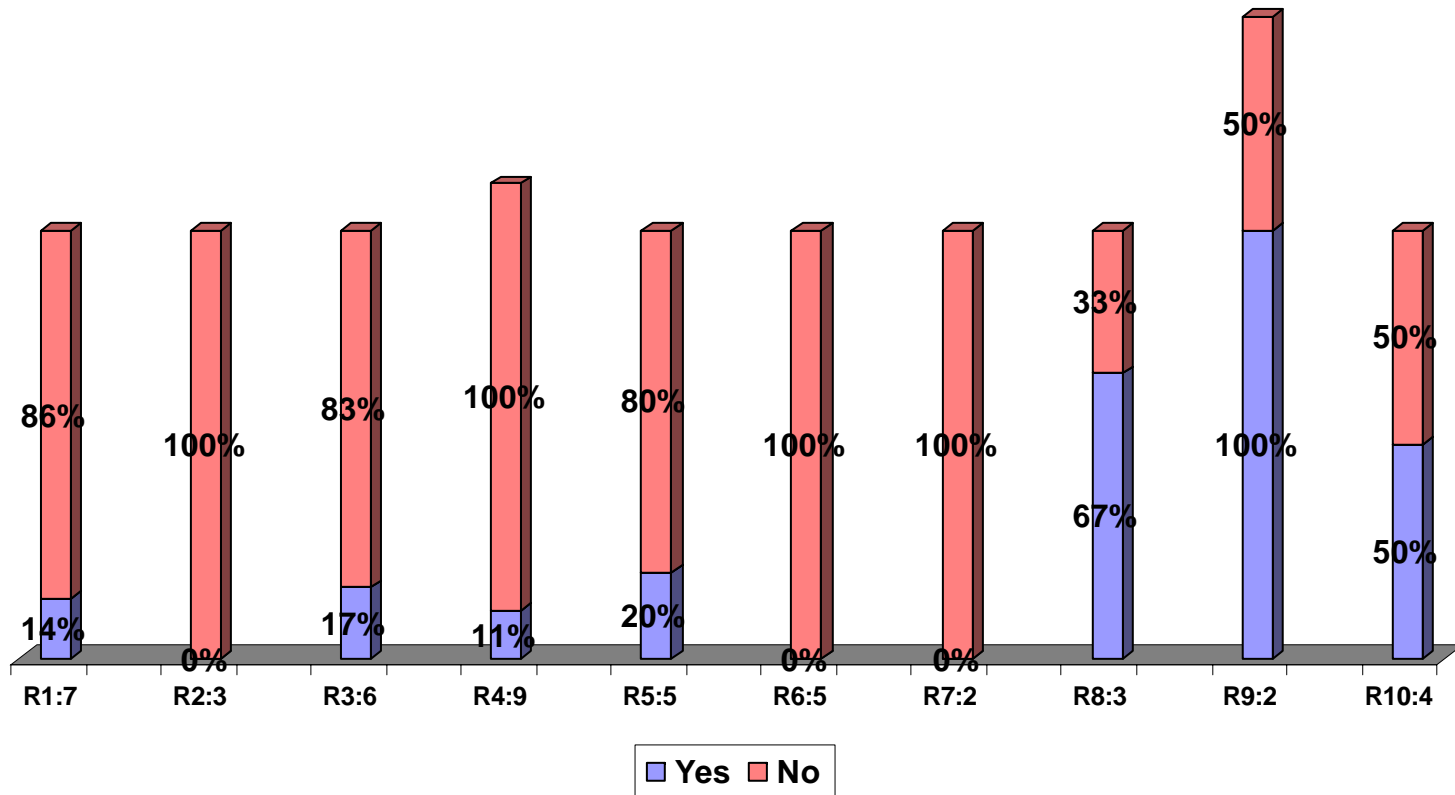
Q5. Has The State Ever Done An Increment Calculation Where The Triggering Source Found That All The Increment Was Consumed By Minor Changes at Major Sources?



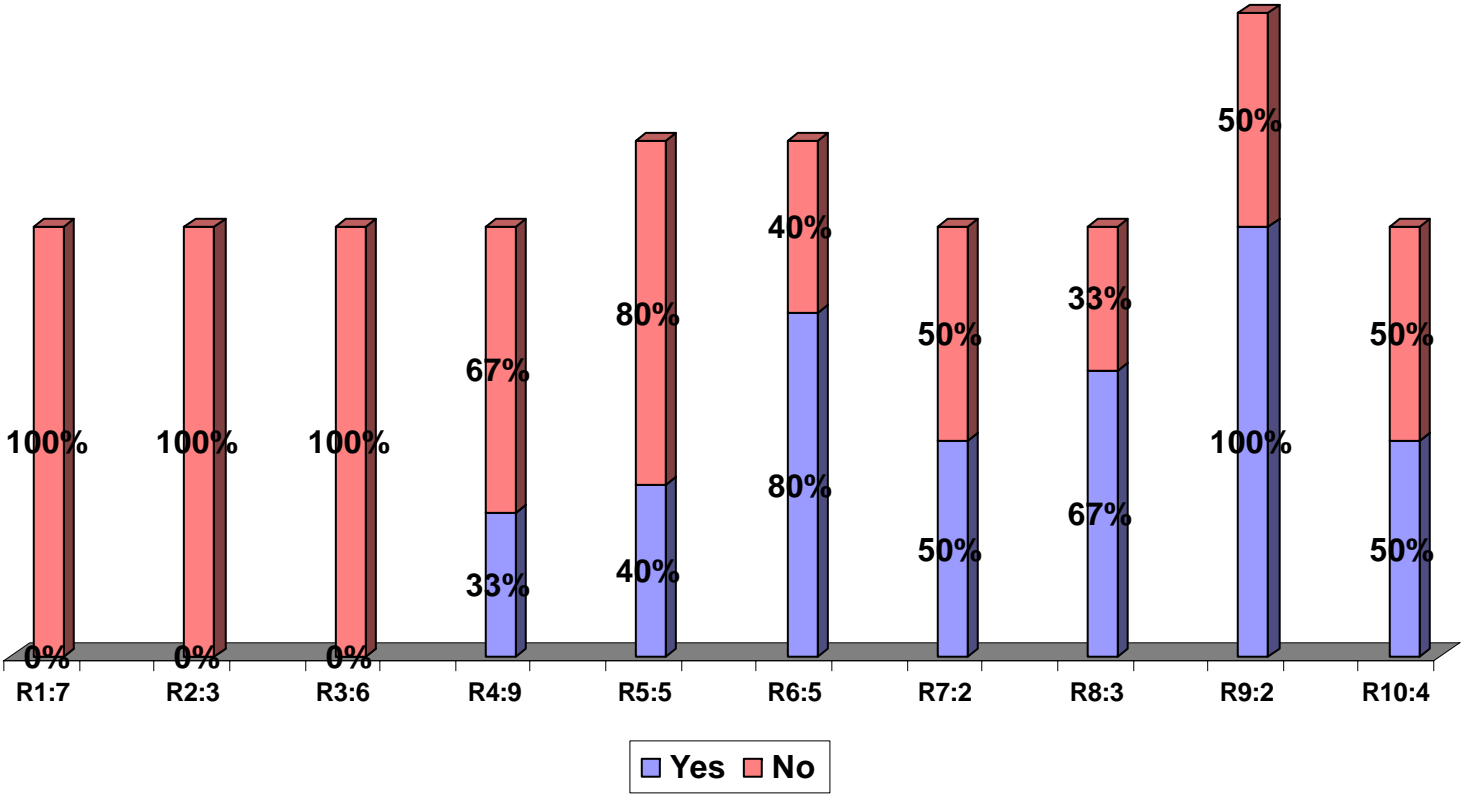
Q7a. Is The Emissions Inventory Of A Class I Area Increment...



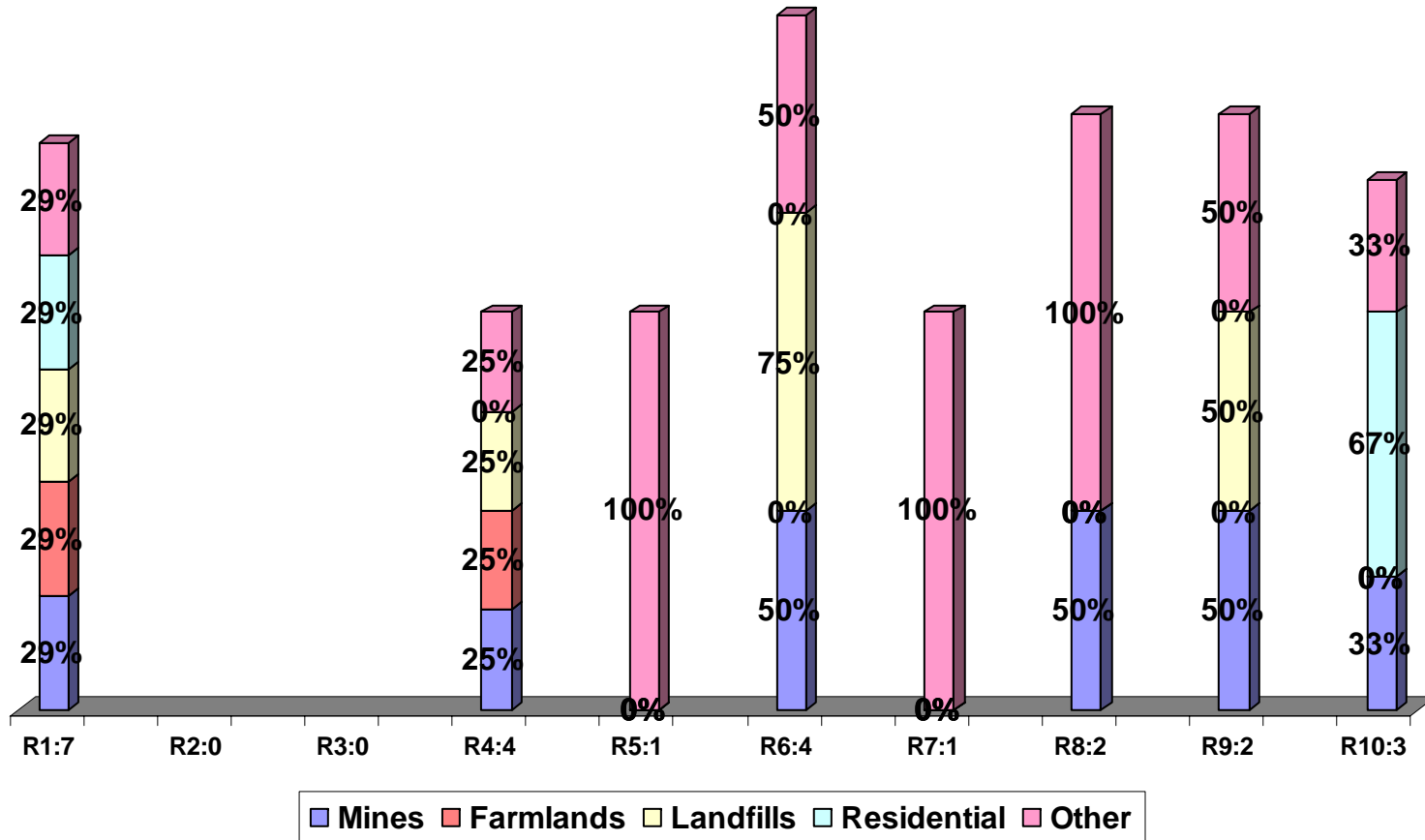
Q7c. Does The State Routinely Include Mobile Sources In the Increment Analysis?



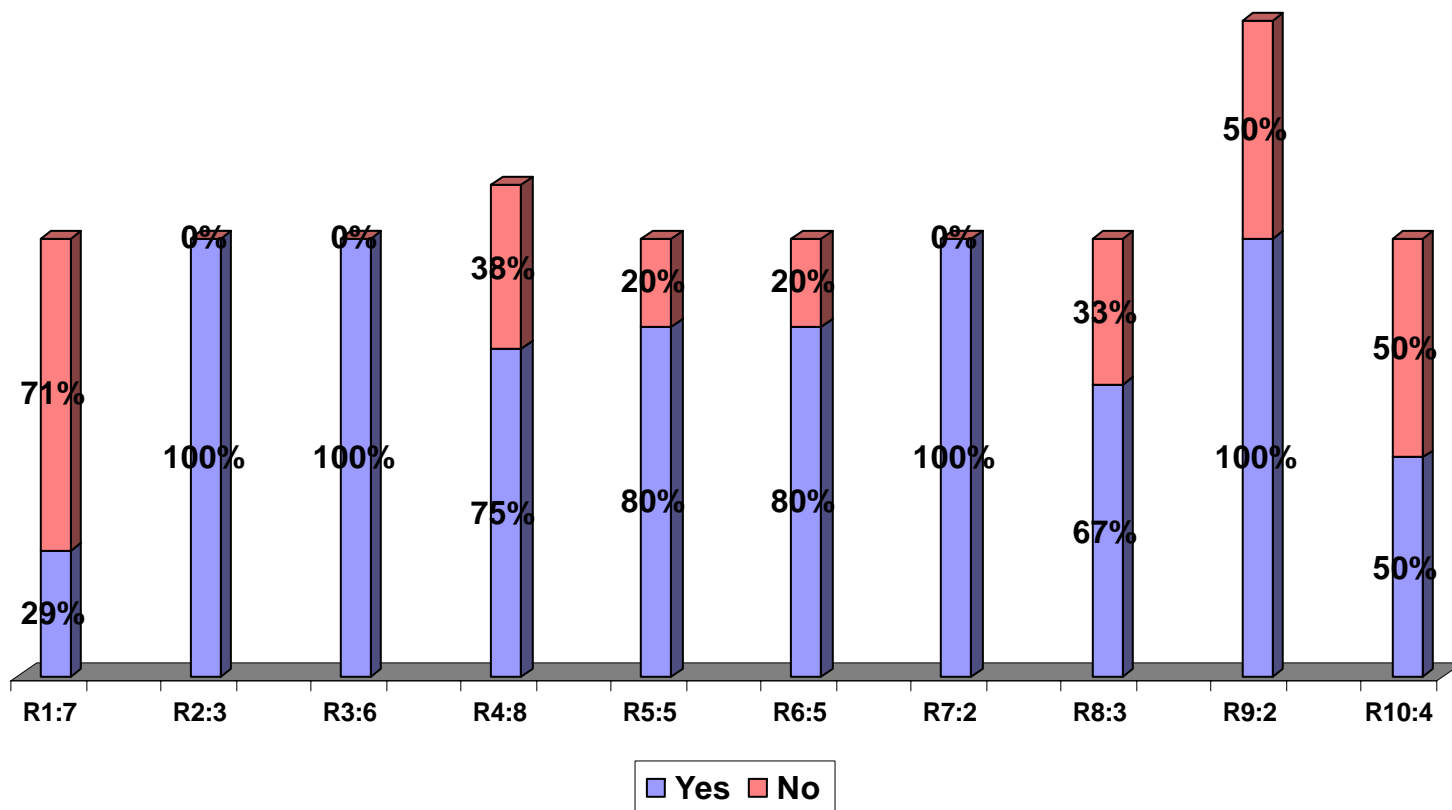
Q7d. Does The State Routinely Include Area Sources In The Increment Analysis?



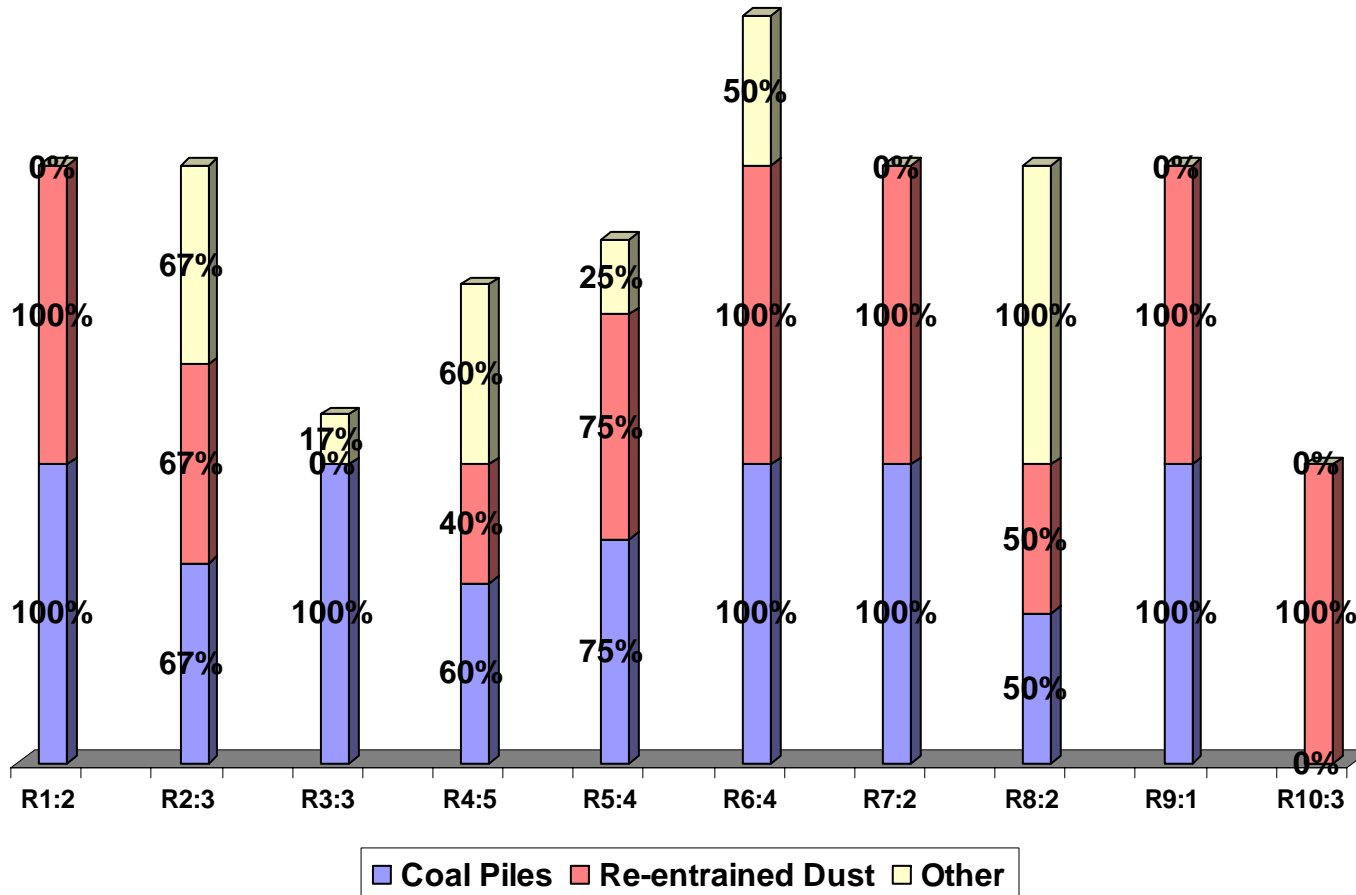
Q7d. If Yes, What Type of Area Sources?



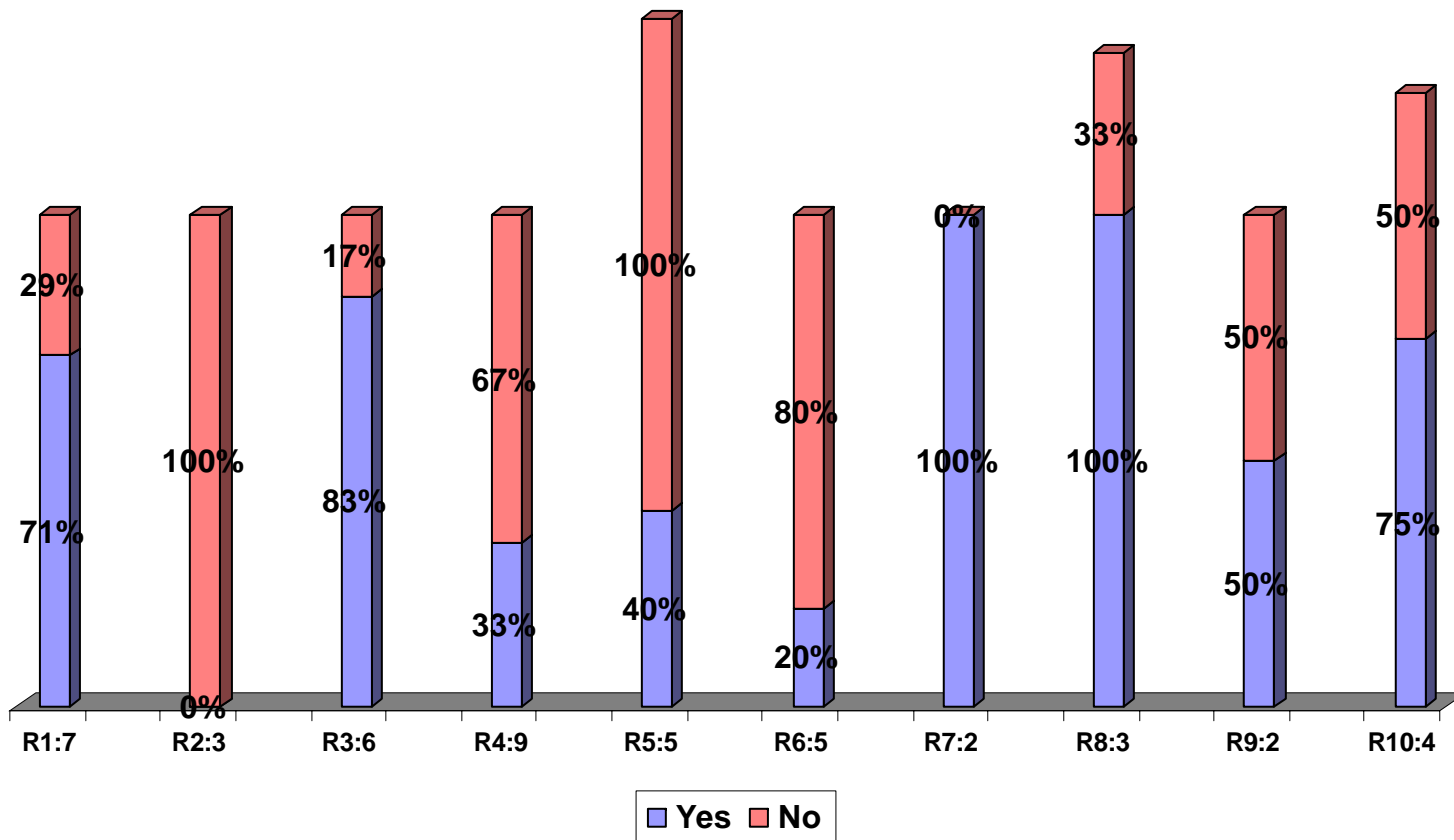
Q7e. Does The State Routinely Include Fugitive Emissions In The Increment Analysis?



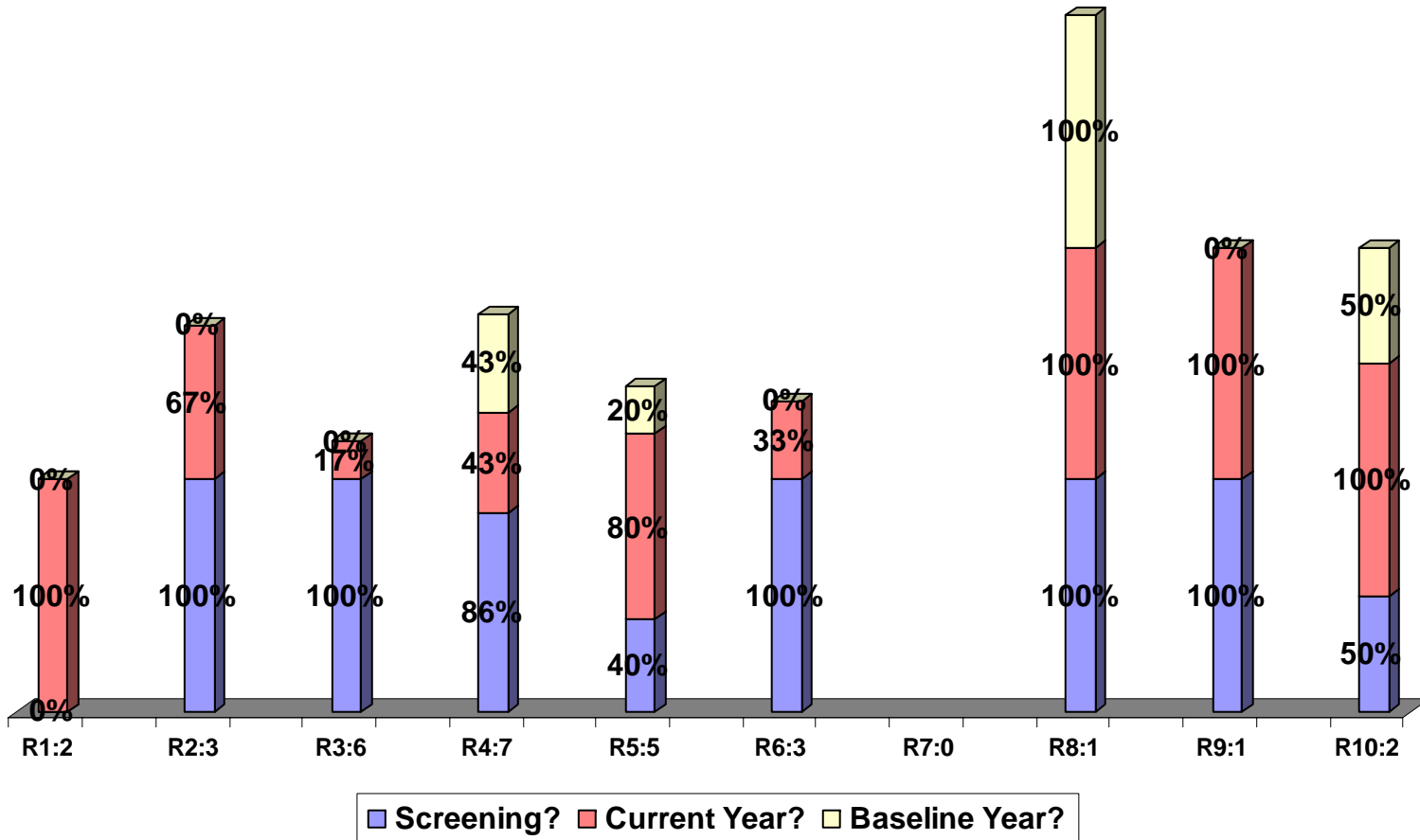
Q7e. If Yes, What Type of Fugitive Emissions?



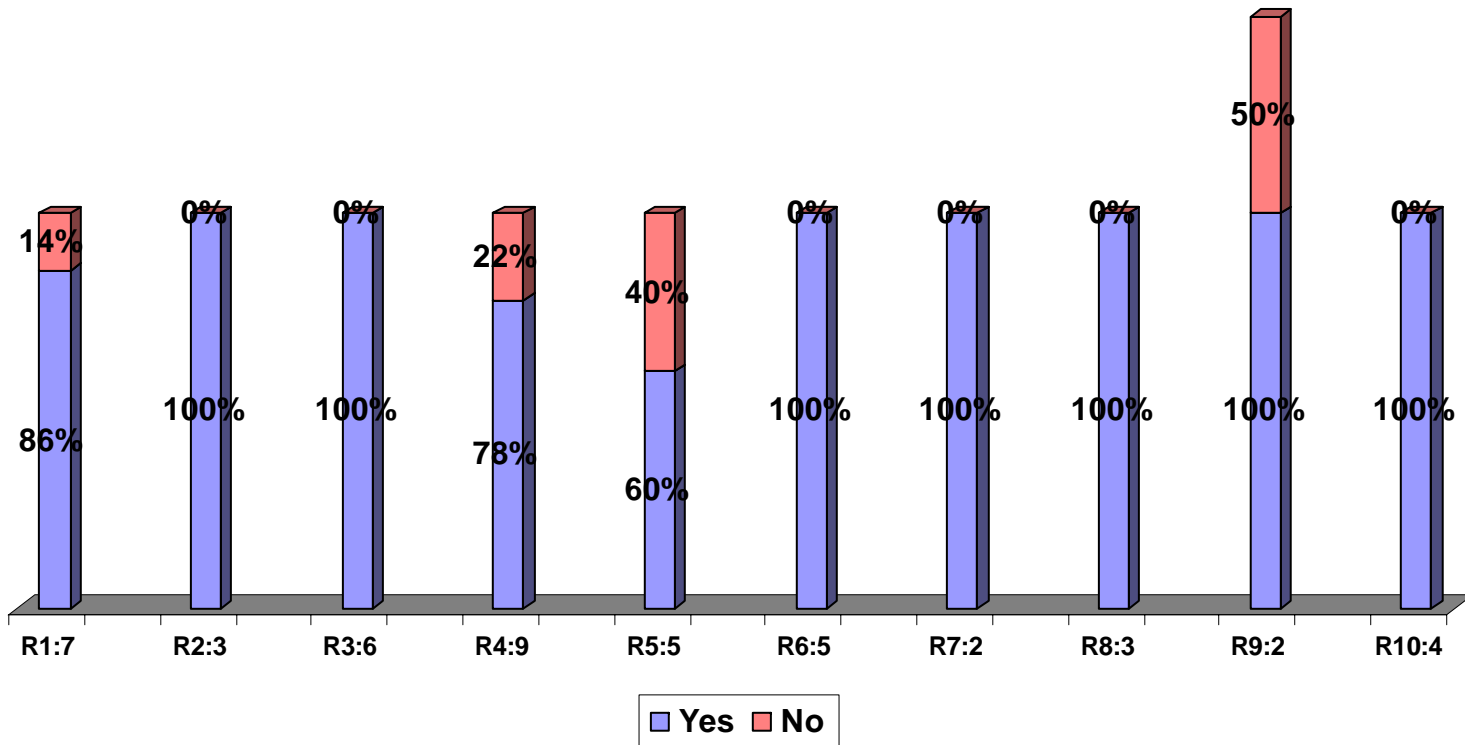
Q7f. Does The State Routinely Base The Increment Analyses On Actual Emissions (Other Than The Proposed Source)?



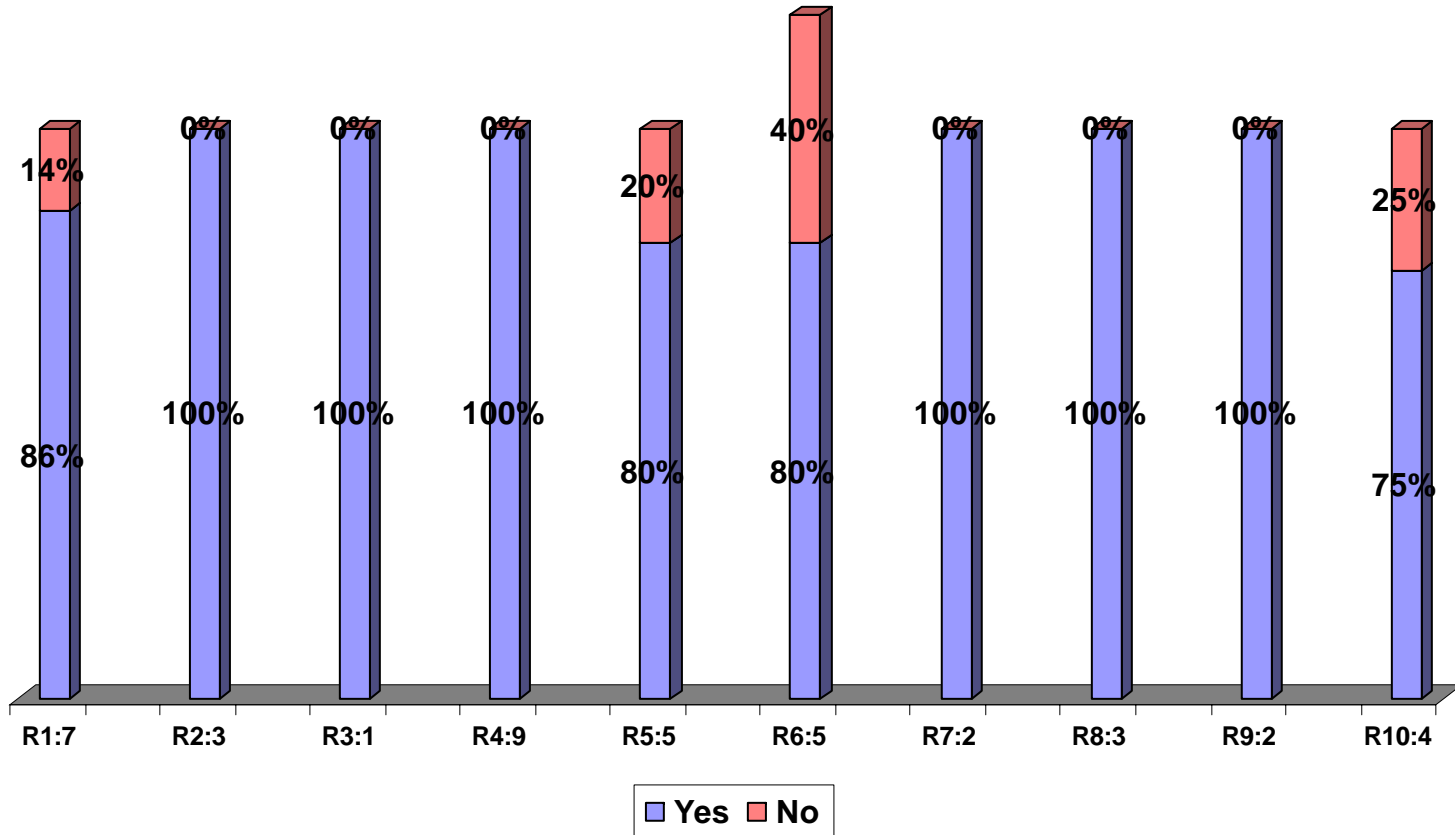
Q7f. If No, Do They Use Allowables For...



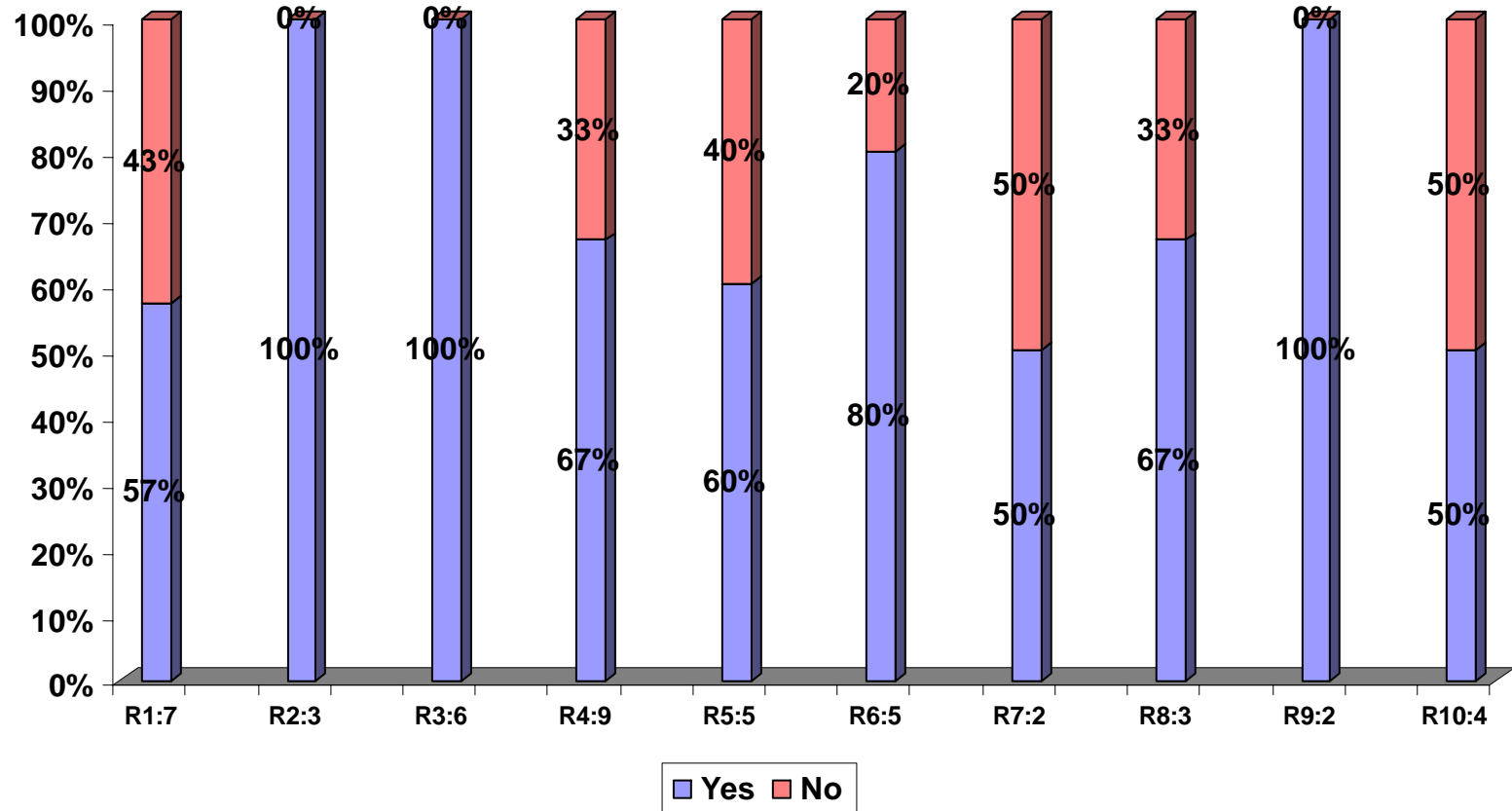
Q7G. Does The State Routinely Include Other Proposed Sources Which Have Filed Complete Applications But Not Yet Constructed?



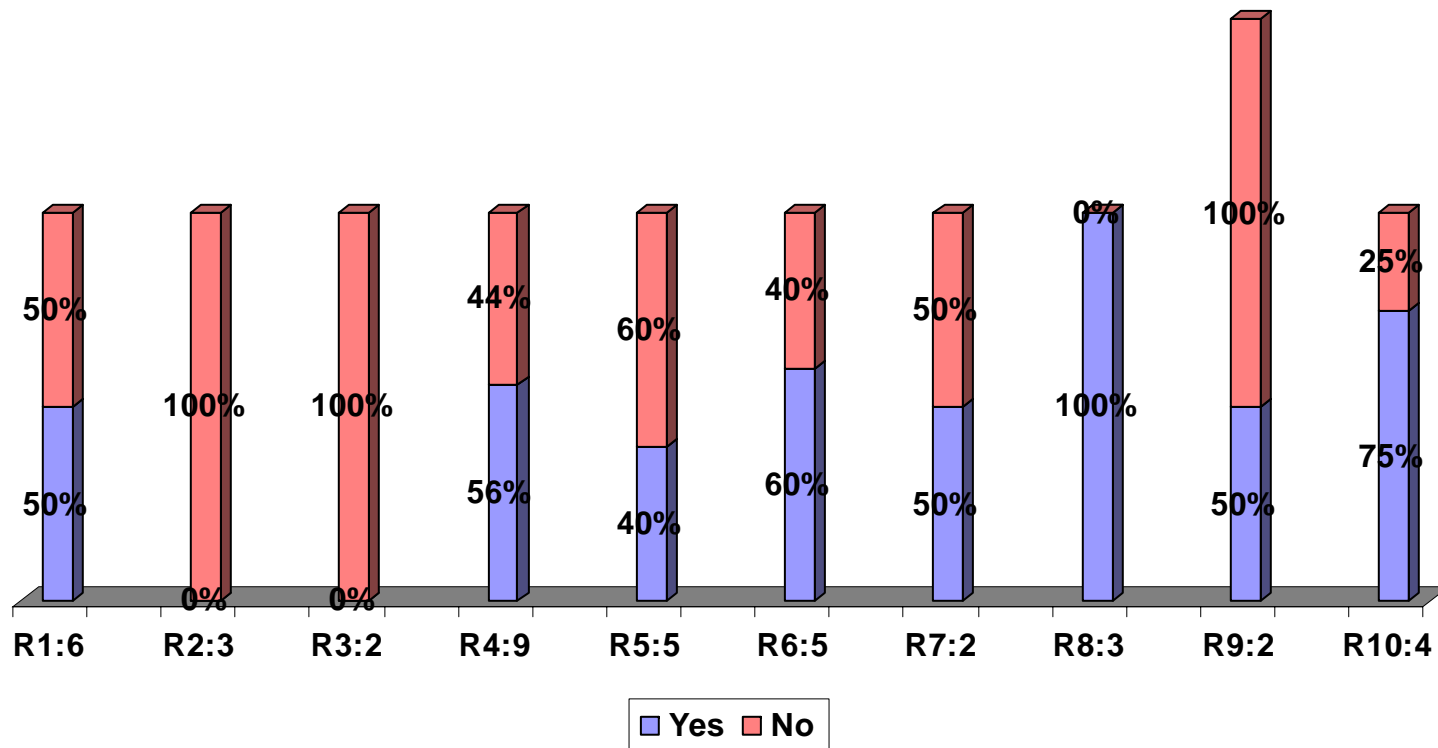
**Q7h. Does The State Routinely Maintain Logs Of Minor Source
Baseline Trigger Dates For Each Baseline Area?**



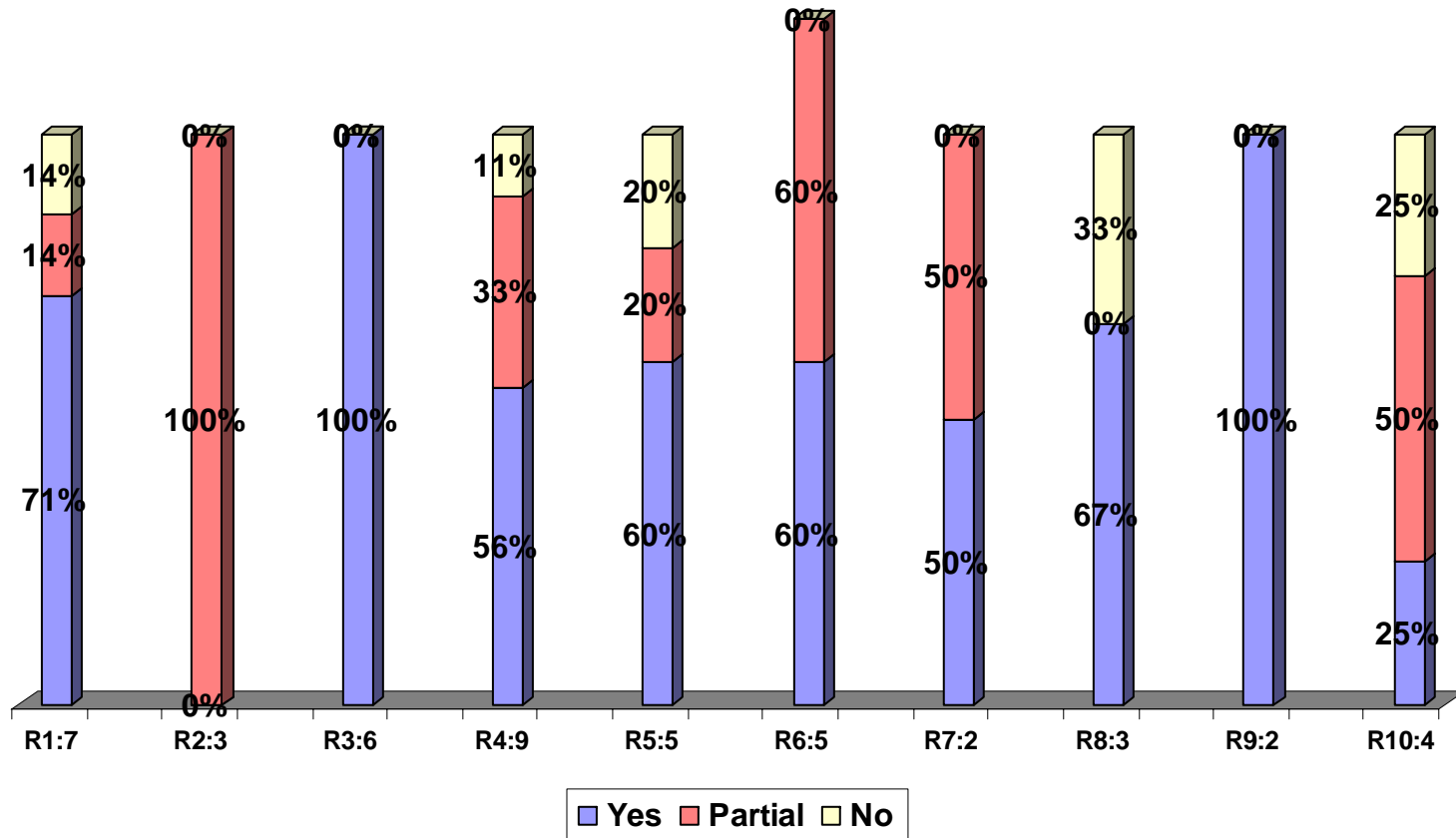
Q7i. Does The State Routinely Maintain A Minor Source Emissions Inventory?



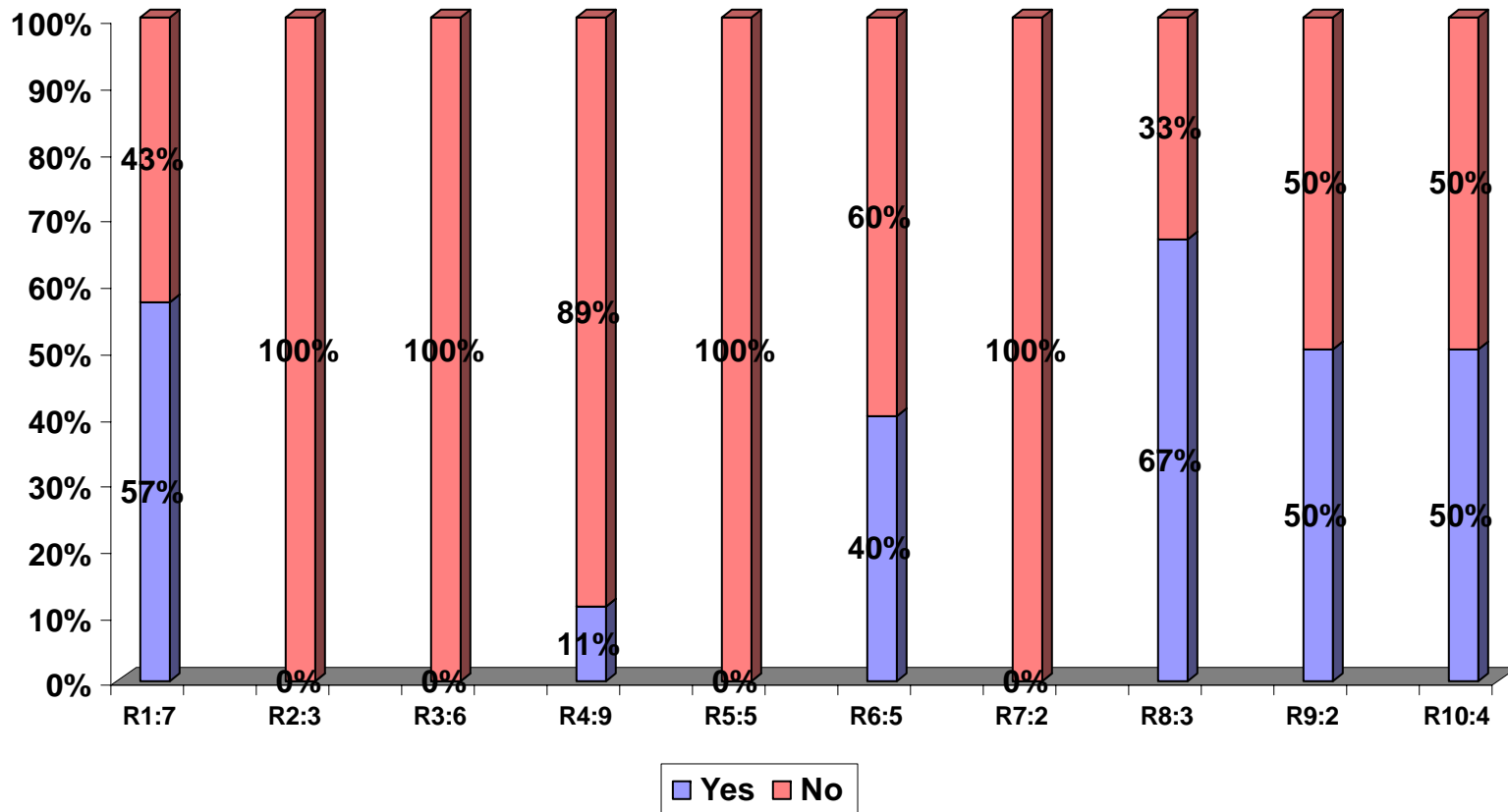
Q7k. Does The State Routinely Intend To Use The New Reporting Emissions Inventory Requirements In 40CFR51.35 To Update The State Modeling Emissions Inventory?



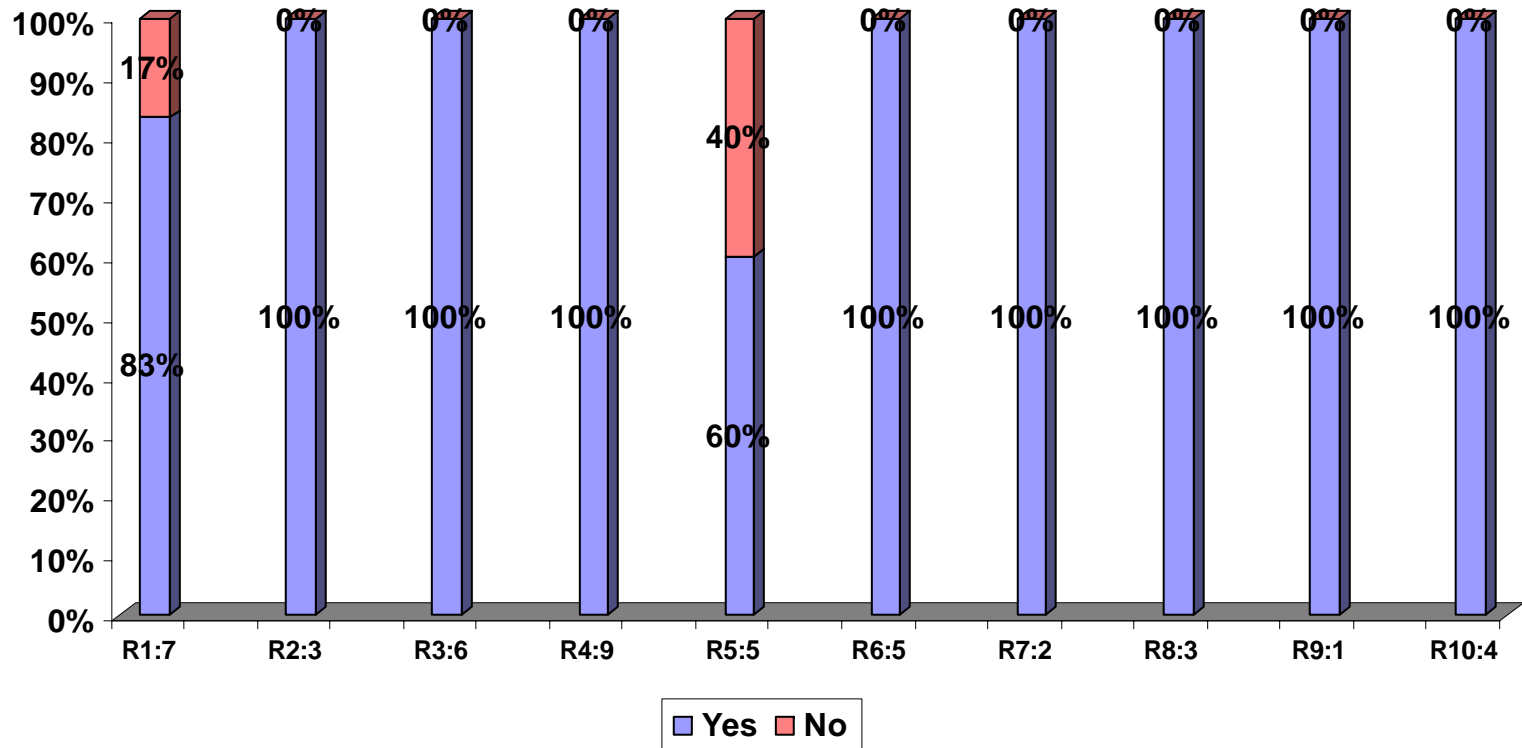
Q7I. Does The Routinely Maintain A Current Actual Emissions Inventory?



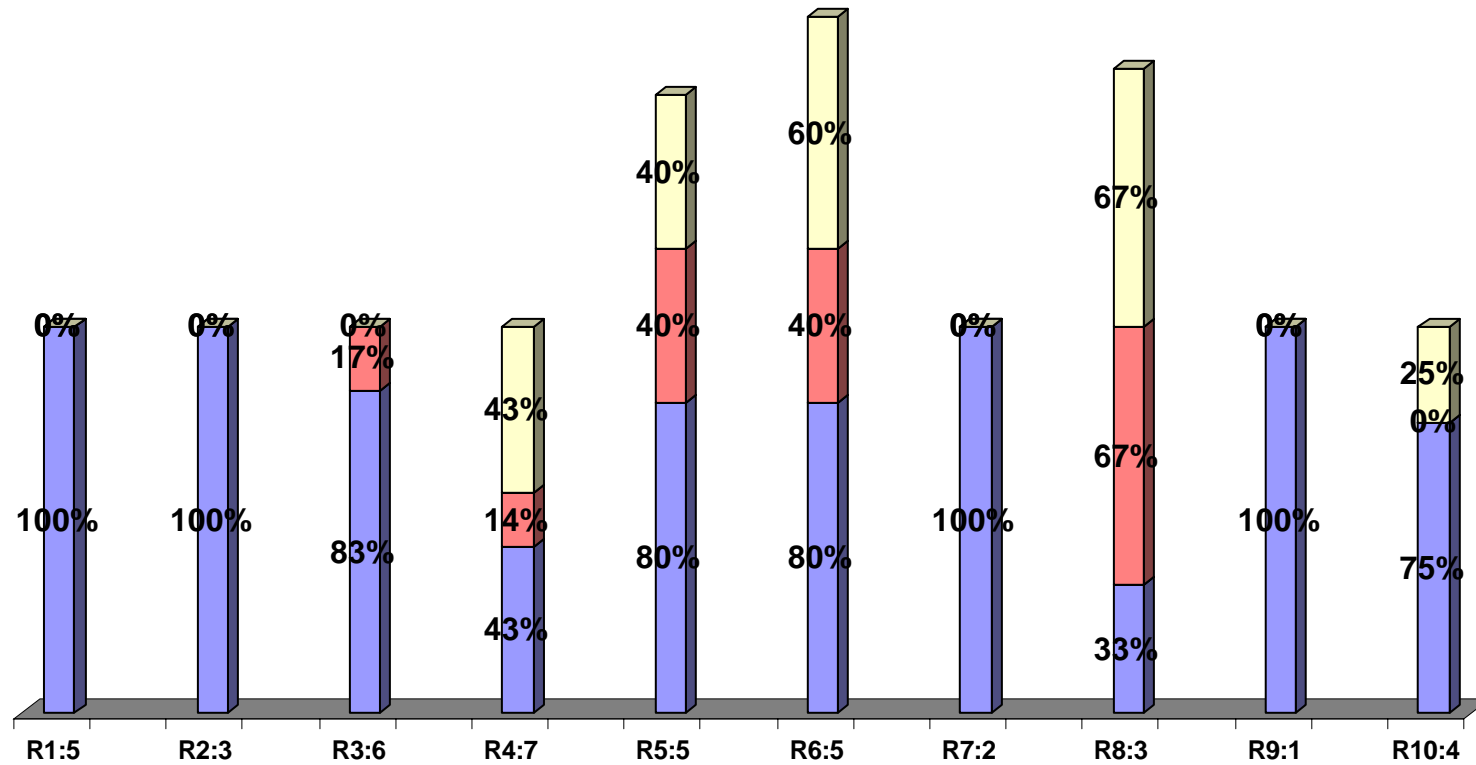
Q7m. Does The State Routinely Maintain A Baseline Actual Emissions Inventory?



Q7o. Does The State Routinely Screen The Emissions Inventory For Possible Important Sources Outside The SIA Up To 50-lm?

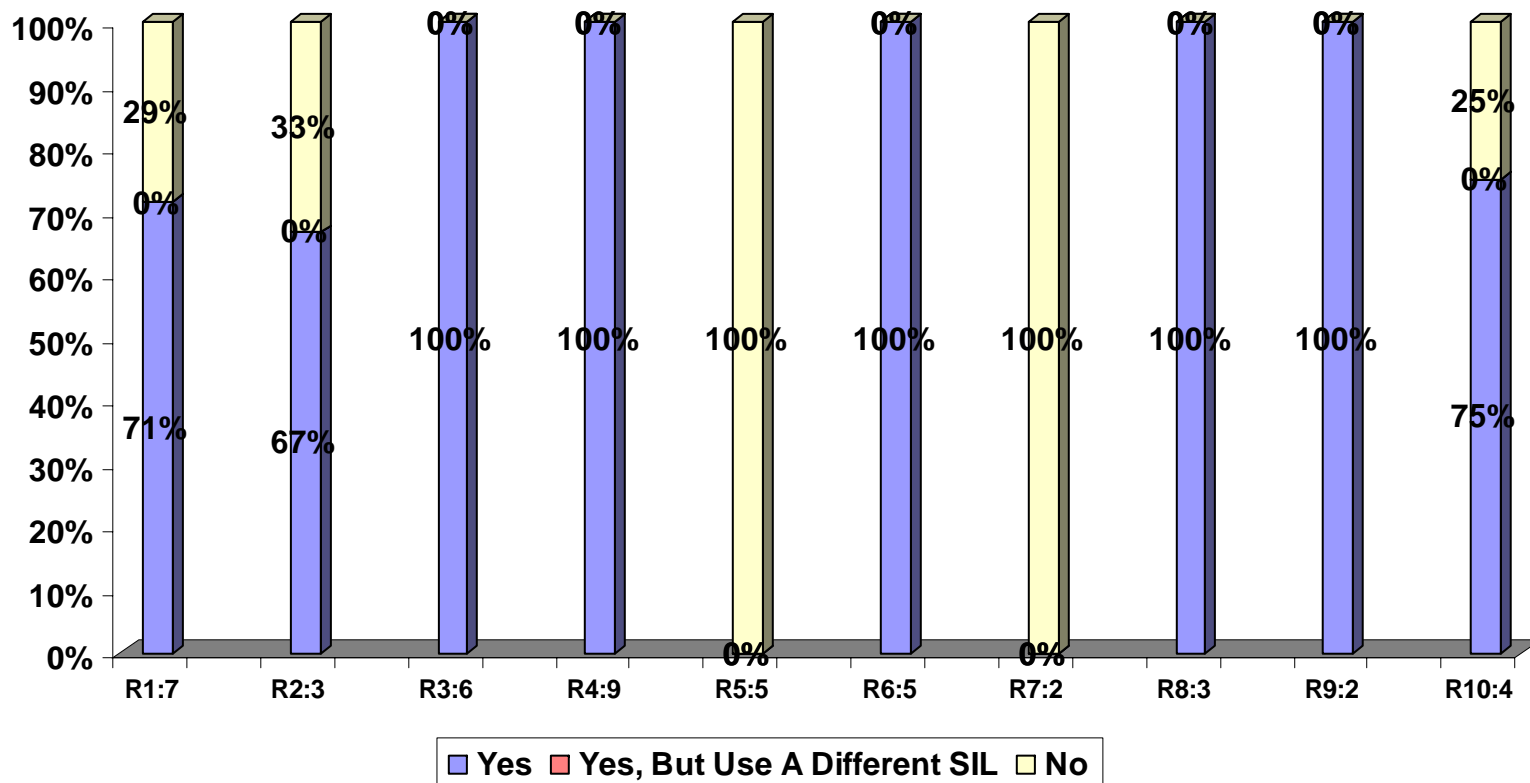


Q7p. Does The State Routinely Place Receptors In The Cumulative Impact Analysis...

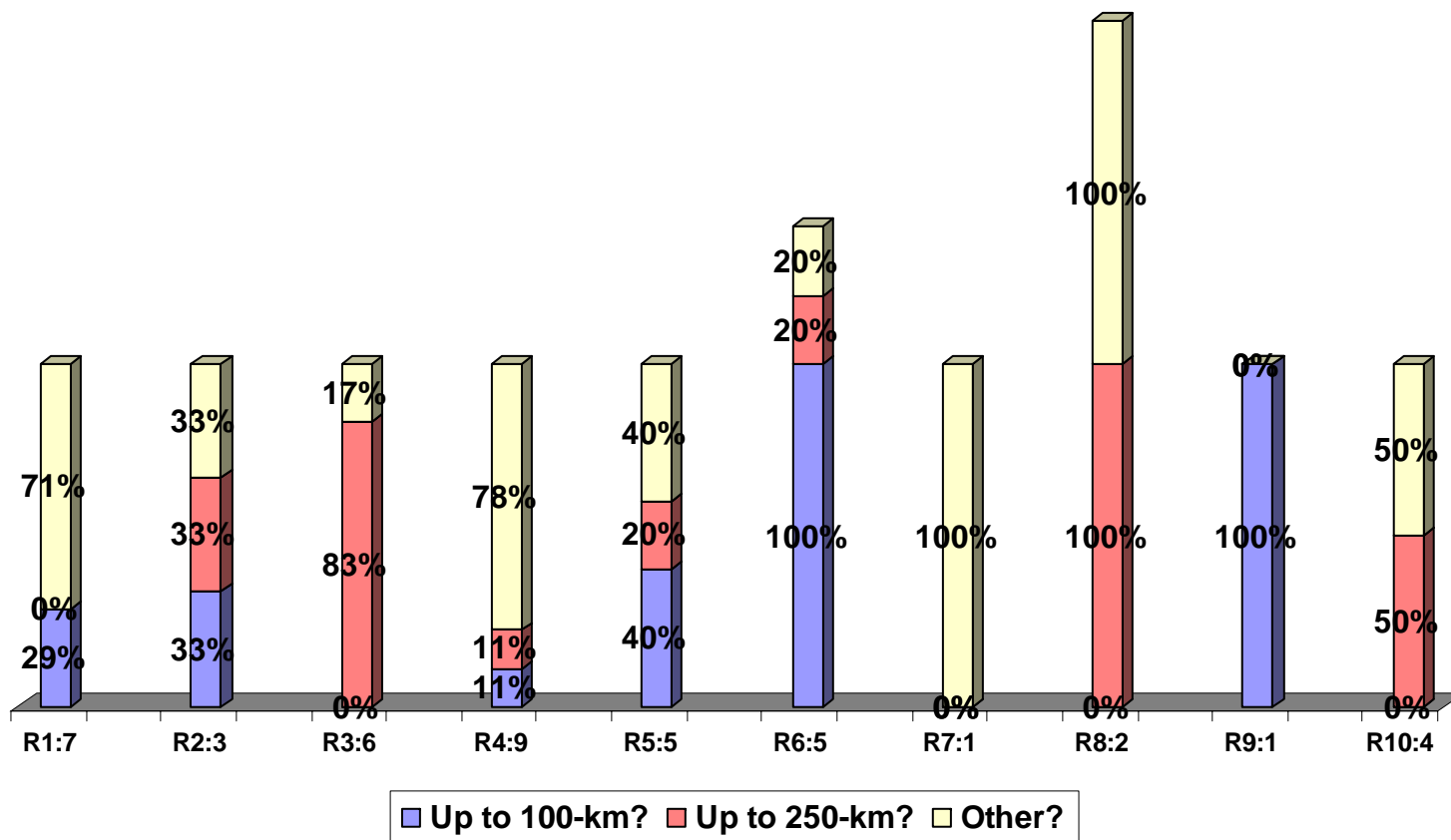


■ Throughout The Circular SIA?
 ■ Where The Source Has A Significant Impact?
 ■ Throughout The SIA And SIA Plus 50-km?

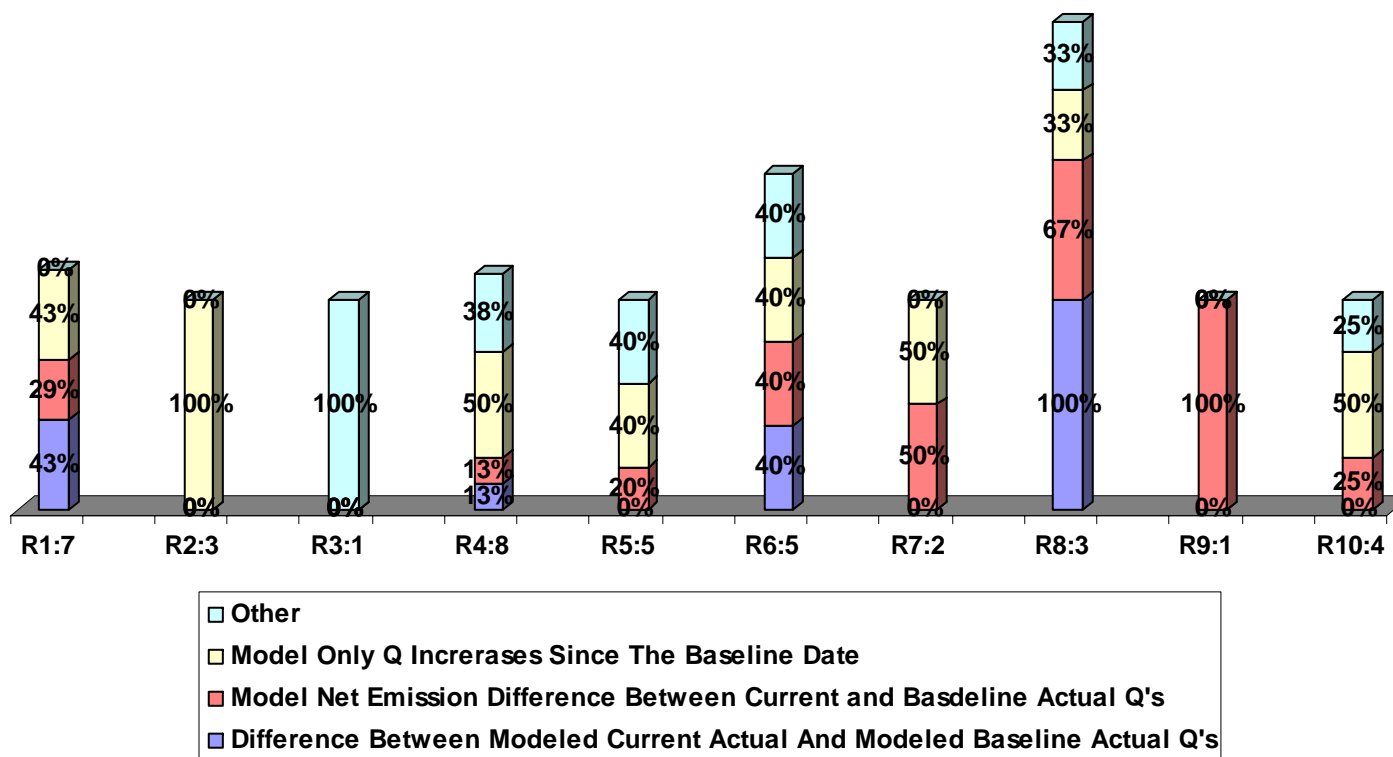
Q8a. Does The State Routinely Notify the FLM Even When Class I Area Impacts Are Less Than The EPA Proposed Significant Impact Levels?



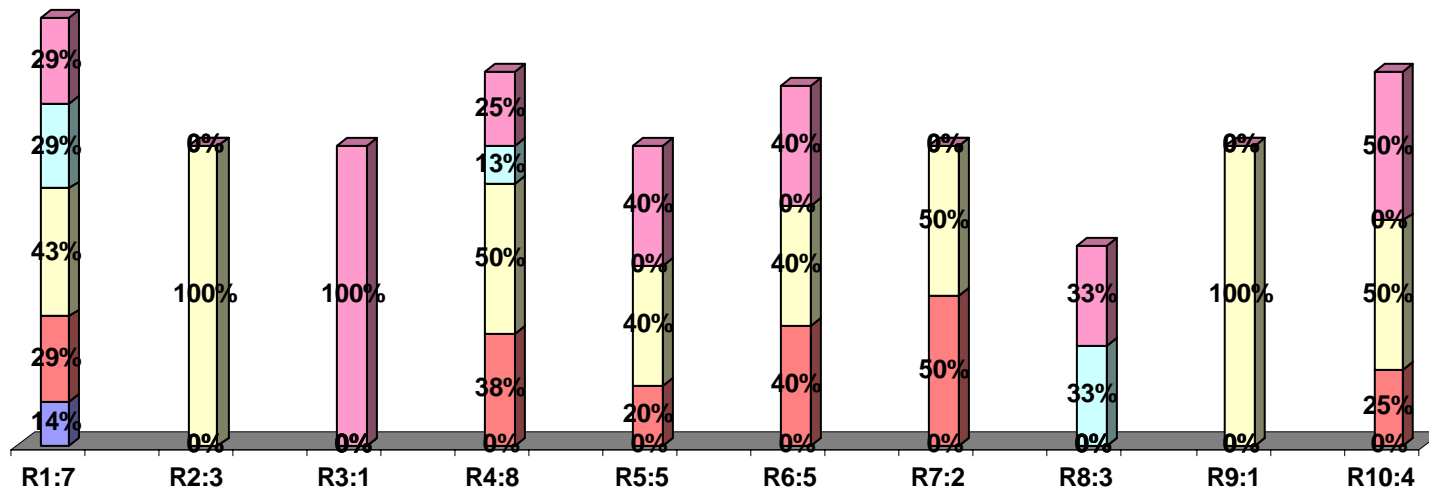
Q8b. Within What Distance From The Class I Area Must A Source Be located In Order to Notify The FLM...



Q9a. How Is PSD Increment Calculated For Sources Which Are Part Of The Baseline But Later Become Part Of the Increment (Annual Increment)?

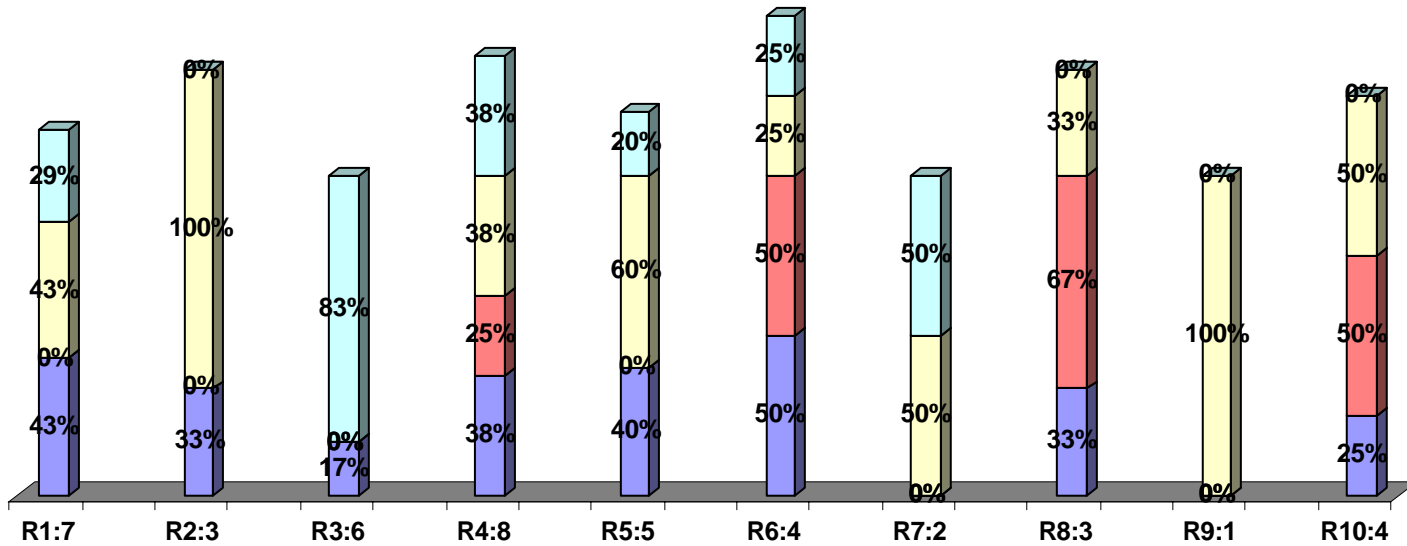


Q9b. How Is PSD Increment Calculated For Sources Which Are Part Of The Baseline But Later Become Part Of The Increment (Short Term Increment)?



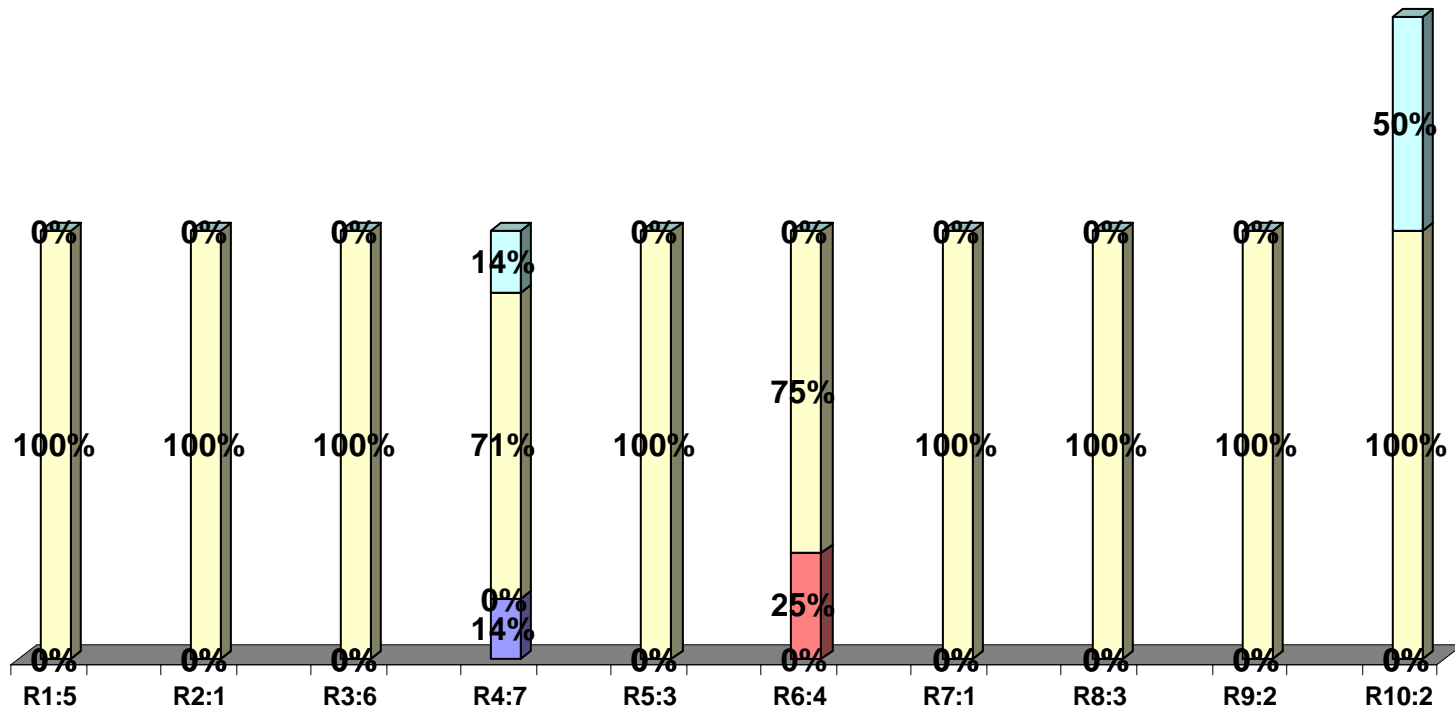
- Other
- Baseline and Current Actual Q's Based On Most Recent 2-years Of Source Operation
- Model Only Q Increases Since The Baseline Date
- Model Net Q Difference Between Current And Baseline Allowable Q's
- Annual Q's Divided By Short Term Period-Difference Between Modeled Current Actual And Baseline Actual Q's

Q9c. How Is The PSD Increment Calculated For Sources Permitted After The Baseline Date (Other Than A New Source At Permitted Levels)?



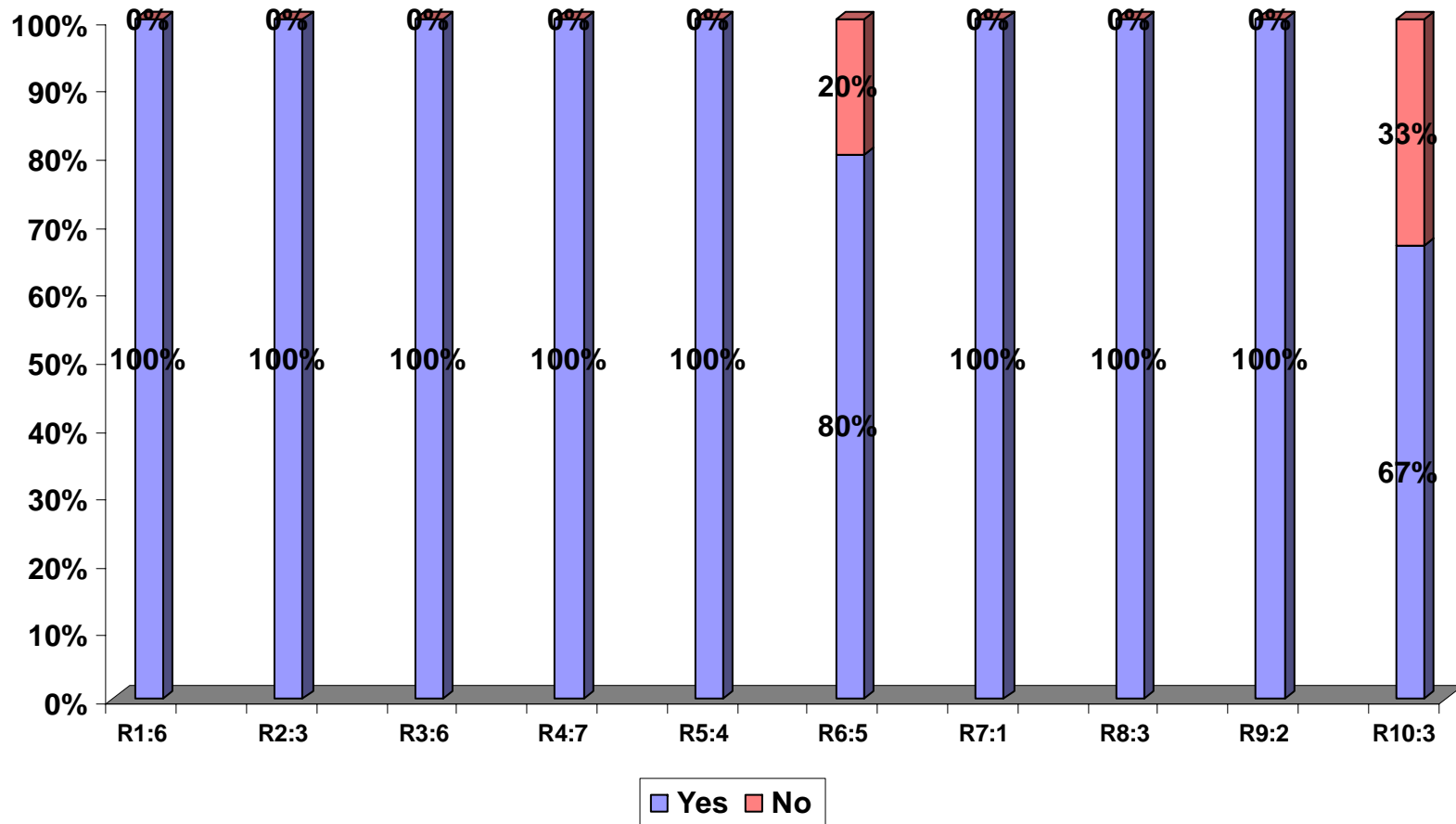
- Other
- Model Actual Increases Since Baseline As "+" and Actual Decreases in Baseline As "-"
- Model The Difference Between Actual Baseline and Actual Current Q's
- Model Only Allowable Q Increases From New Sources Since Baseline Date

Q10. If The State Models The Baseline Year Emissions, Which Year(s) Of Meteorology Do They Use For The Baseline?

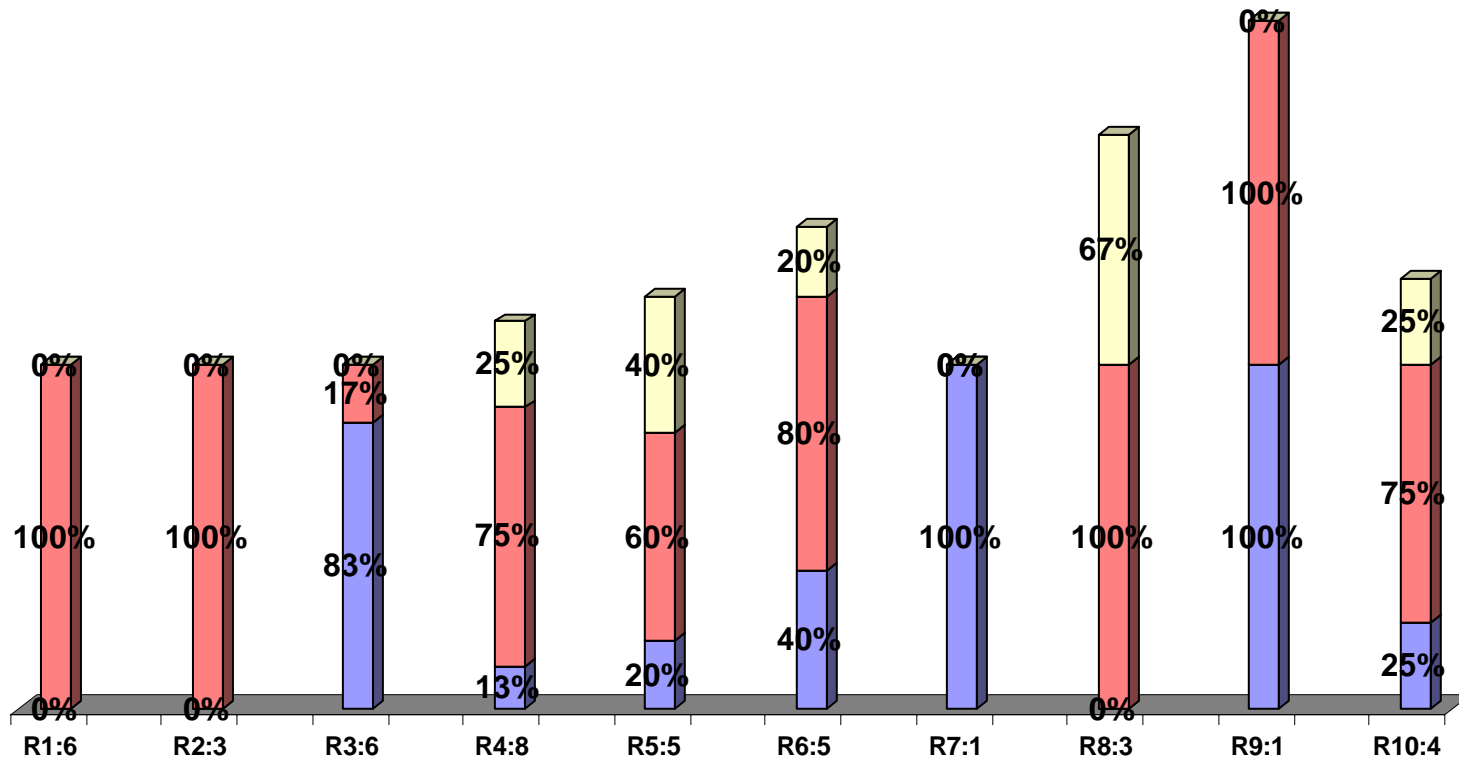


■ The Baseline Year(s)
 ■ The Current Year(s)
 ■ The Most Recent, Readily Available Year(s)
 ■ Other

Q11. Are The Modeled Receptors Paired In Time and Space?

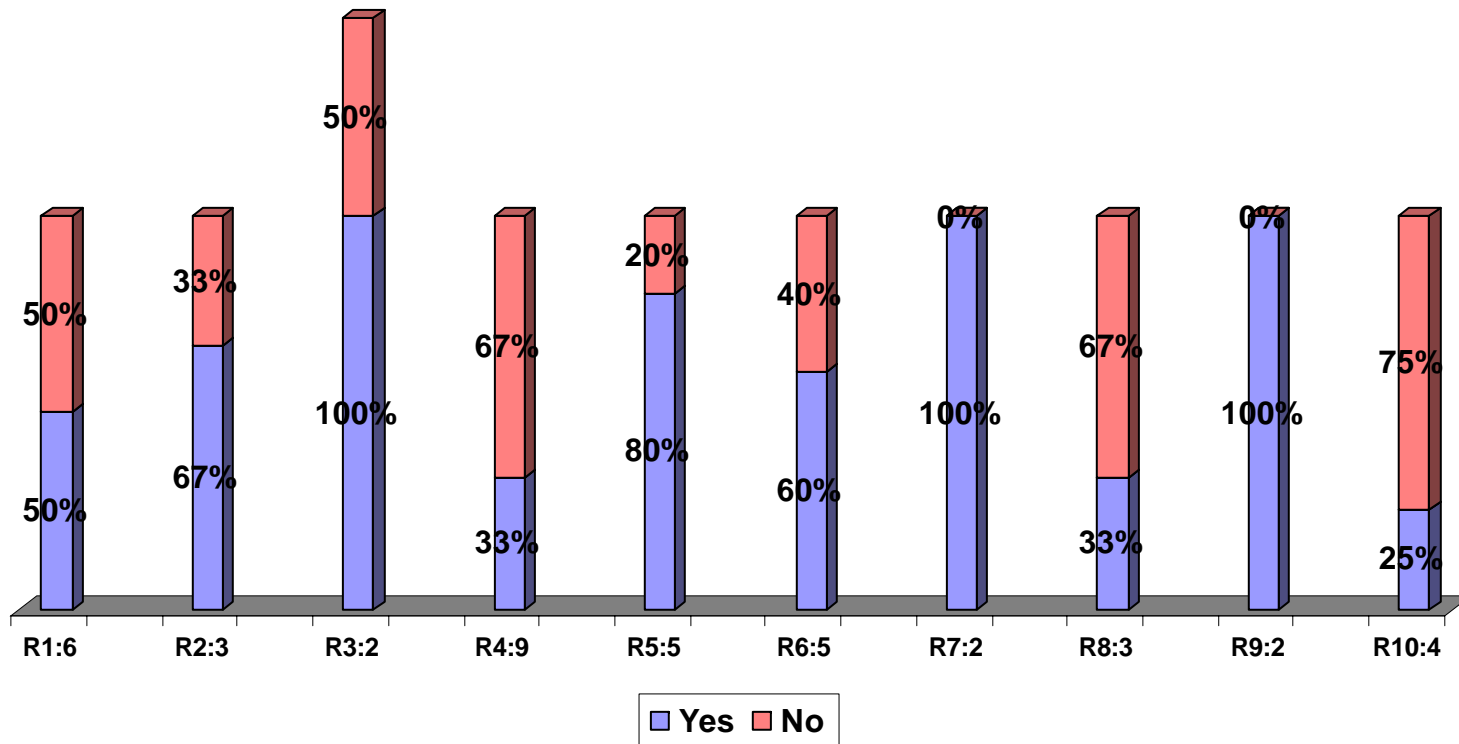


Q12. Is Cumulative Impact Of The 24-Hour Average PM10 PSD Increment Based On The...

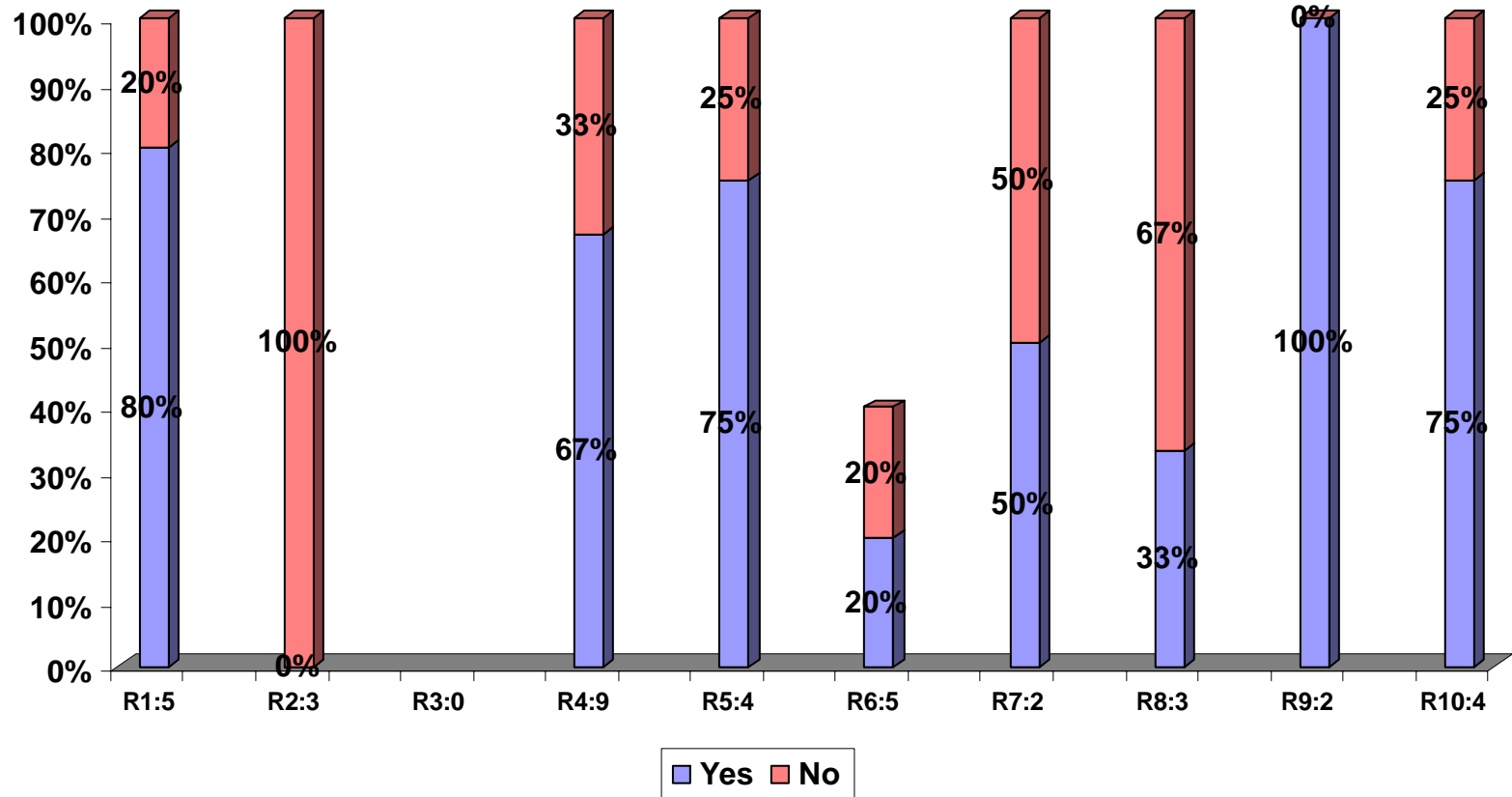


■ Highest Modeled Impact?
 ■ H2H Modeled Impact?
 ■ H6H Modeled Impact?

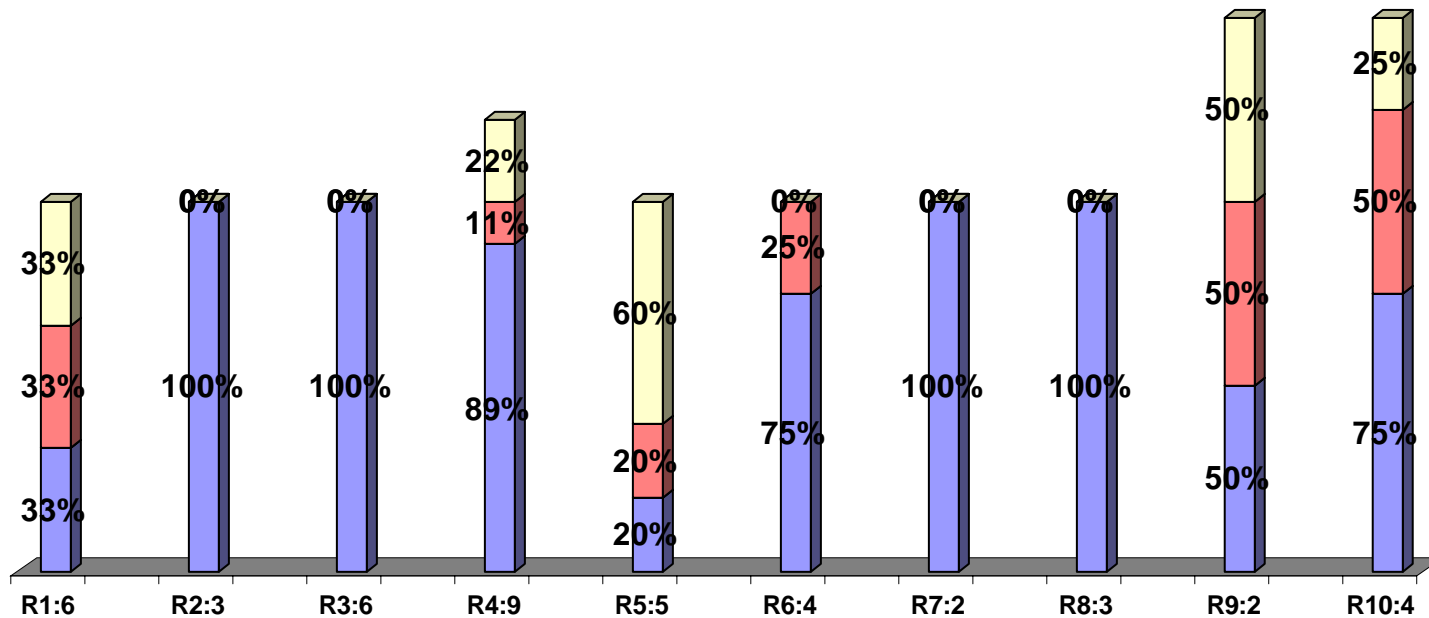
Q13. Are The Physical Stack Parameters Modeled For The Proposed Source Incorporated Into Its Final Permit (E.G. stack height and stack diameter)?



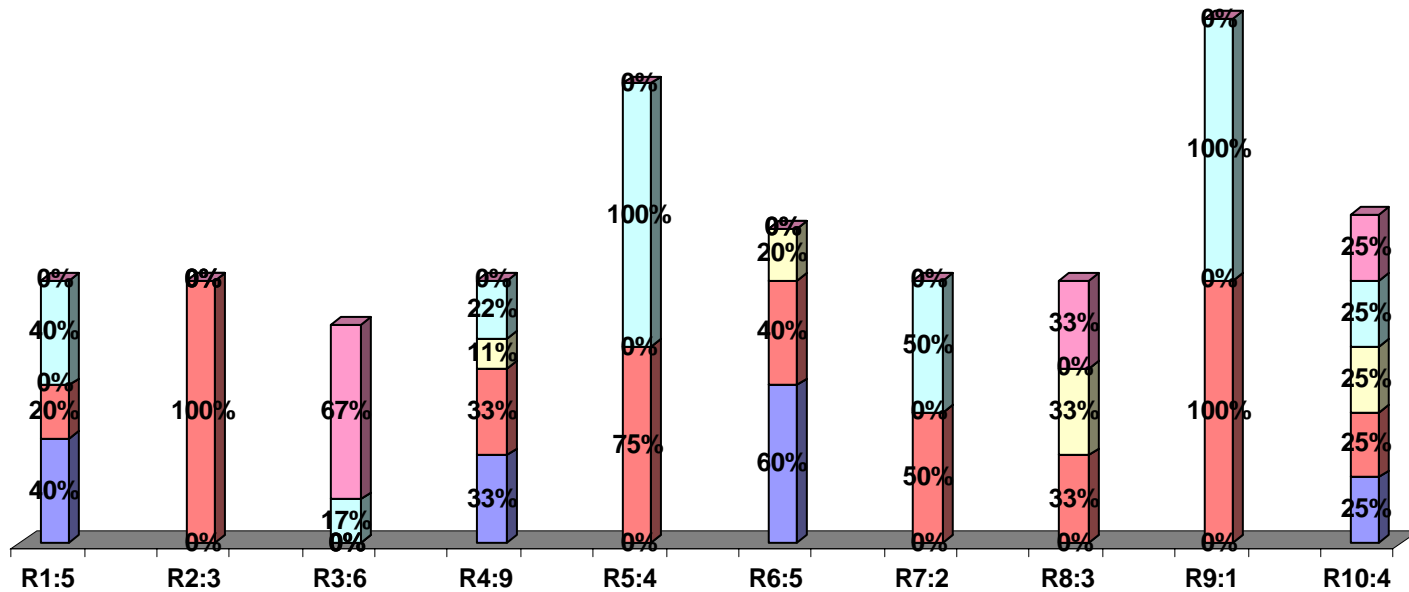
Q14. Are There Areas In The State That Have Not Triggered A Minor Source Baseline Date For Any Pollutant?



Q15. How Does The State Quantify The Actual Emission Increases?

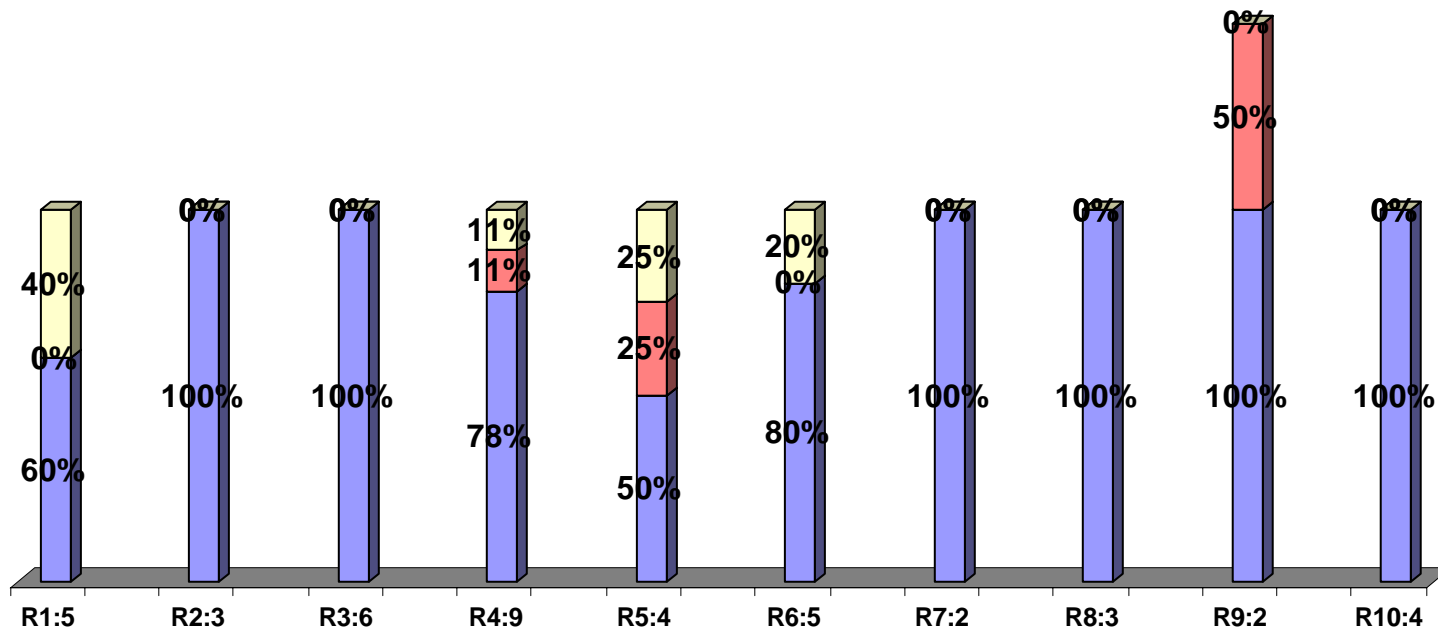


Q16. How Does The State Quantify Short Term Actual Emission Increases From Existing Sources?

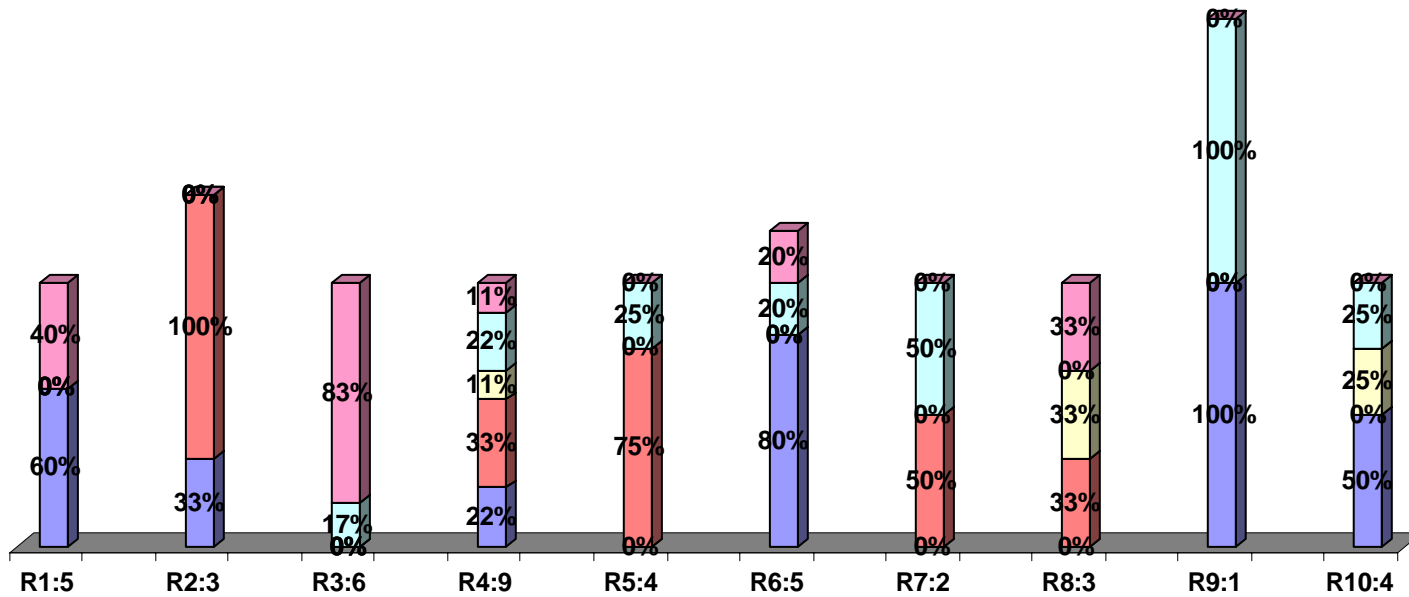


- Other
- Allowable Short Term Q Rate
- Annual Average Q Rate Over Last 2-Years of Normal Operation
- Maximum Actual Short Term Q's Over Last 2-Years of Normal Operation
- Average Actual Short Term Q's Over Last 2-Years of Normal Operation

Q17. How Does The State Quantify Actual Annual Emission Reductions?

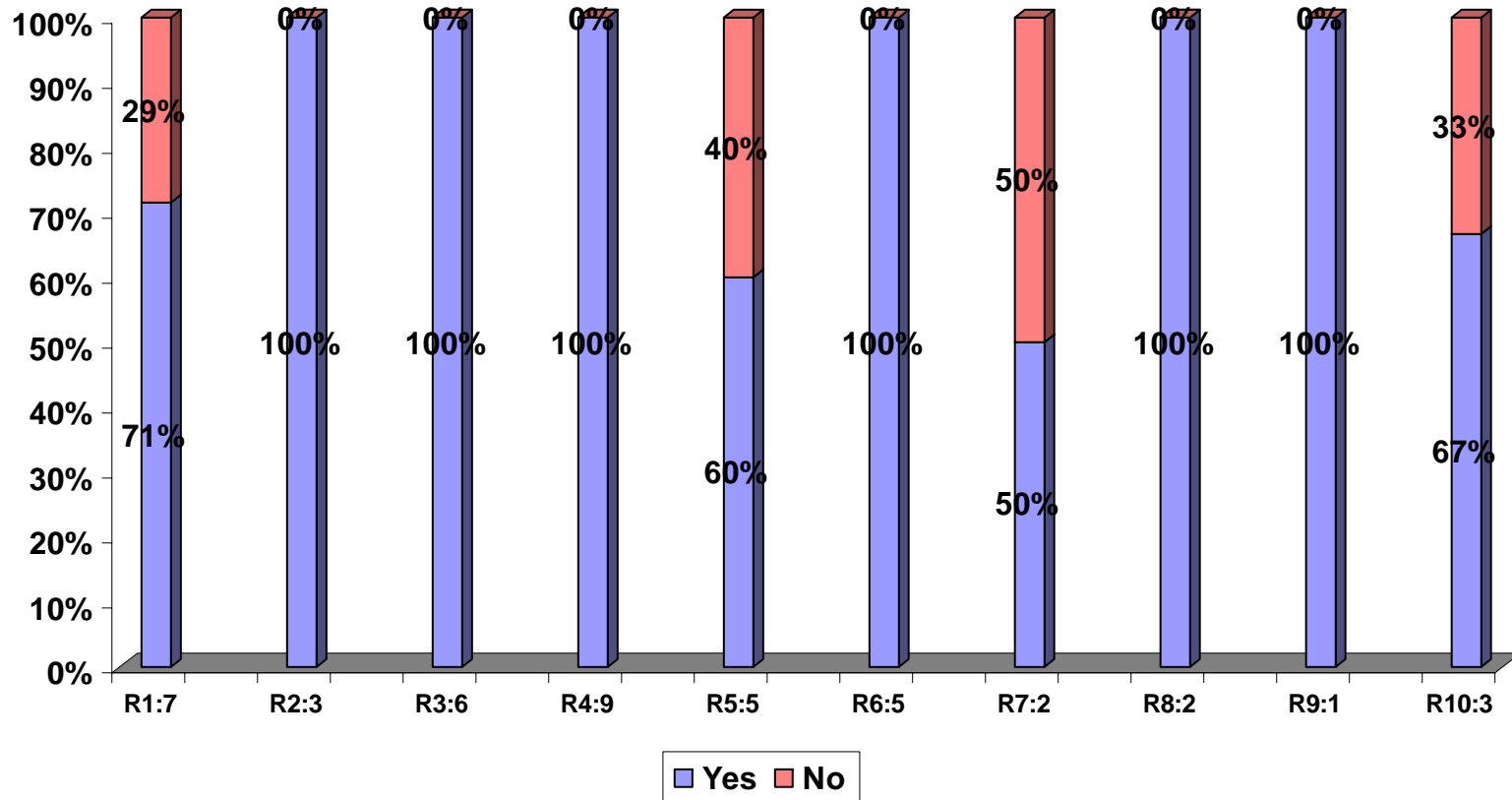


Q18. How Does The State Quantify The Short Term Actual Emission Reductions?



- Other
- Allowable Short Term Q Rate
- Annual Average Q Rate Over Last 2-Years of Normal Operation
- Maximum Actual Short Term Q's Over Last 2-Years of Normal Operation
- Average Actual Short Term Q's Over Last 2-Years of Normal Operation

Q19. Does The State Require Emission Reduction Credits To Be Federally Enforceable?



Q19. If Yes, When In The Permitting Process Does It Need To Be Federally Enforceable?

